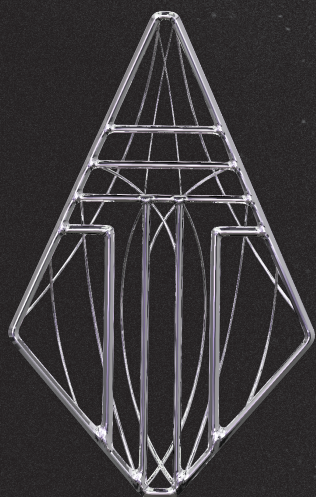


C O N V E R



TETHER

E N C E R





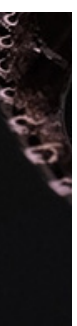
C O N V E R G E N C E .  
T O G E T H E R   I N   T I M E  
A N D                S P A C E .        A  
G A L A C T I C   M E R G I N G  
I N T O            O N E .        T H I S  
S I N G U L A R I T Y ,  
P E E R I N G       I N T O        A  
N E W   U N I V E R S E   W I T H  
F R E S H   E Y E S .   H E A R   I T  
B R E A T H E   W I T H   O P E N  
E A R S .   A   N E W   W O R L D  
I S   U P O N   U S .

NATURAL GEMSTONES	04
CAST SHAPES	20
CHARMS & CHAIN ATTACHMENTS	28
SIGNATURE CLICKERS	38
WEIGHTS	56
MODERN HOOPS	66
NECKLACES	78
CLASSIC CLICKERS	84



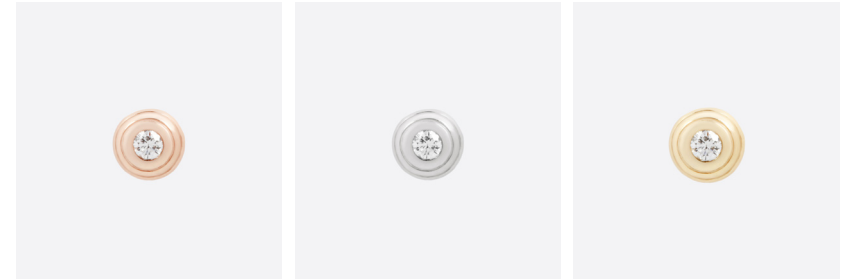


CONVERGENCE 2022



# NATURAL GEMSTONES





## OMEGA 00

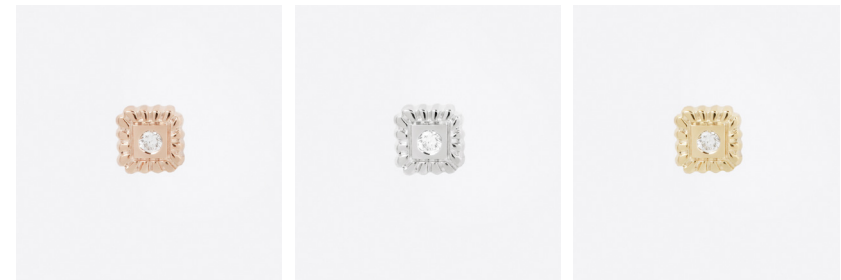
SKU 5000-0033  
3 COLORS

Concentric gold circles rippling like waves on a pond surround the 1.5mm natural diamond accent of our Omega 00 threadless end.

SIZE: 3.5MM

ETHICALLY SOURCED NATURAL DIAMOND SIZE:  
1.5MM VS2 CLARITY

ASTM F-138 IMPLANT-GRADE STEEL UNIVERSAL PIN  
CAST IN SOLID RECYCLED CERTIFIED 14K ROSE GOLD,  
NICKEL-FREE WHITE GOLD AND YELLOW GOLD  
ALL TETHER NATURAL DIAMONDS ARE CONFLICT-FREE AND  
CONFORM TO THE KIMBERLEY PROCESS.



## OMEGA 04

SKU 5000-0037  
3 COLORS

A complex form of contrasting material and texture, the OMEGA 04's gold and carbon lattice are composed of a 1mm diamond flush set into a polished plane of solid gold, surrounded by deep rays that reflect light from every angle.

SIZE: 3.2 X 3.2 X 1.5

STONE SIZE: 1MM

ASTM F-138 IMPLANT-GRADE STEEL UNIVERSAL PIN  
CAST IN SOLID RECYCLED CERTIFIED 14K ROSE GOLD,  
NICKEL-FREE WHITE GOLD AND YELLOW GOLD  
ALL TETHER NATURAL DIAMONDS ARE CONFLICT-FREE AND  
CONFORM TO THE KIMBERLEY PROCESS.



## OMEGA 06

SKU 5000-0034  
3 COLORS

This stepped galactic tetrahedron glimmers like an artificial star in the distance. Our Omega 06 solid 14k recycled gold threadless end features a tiered three-sided pyramid profile topped with a gleaming 1mm conflict-free diamond.



SIZE: 3.5MM  
ETHICALLY SOURCED NATURAL DIAMOND SIZE: 1MM VS2 CLARITY  
ASTM F-138 IMPLANT-GRADE STEEL UNIVERSAL PIN  
CAST IN SOLID RECYCLED CERTIFIED 14K ROSE GOLD, NICKEL-FREE  
WHITE GOLD AND YELLOW GOLD

## OMEGA 12

SKU 5000-0040  
2 STONES  
3 COLORS

Twelve voids orbit the glittering facets of a 2mm reverse-set black diamond and Chrysoprase at the center of our solid gold OMEGA 12 threadless end.



### BLACK DIAMOND

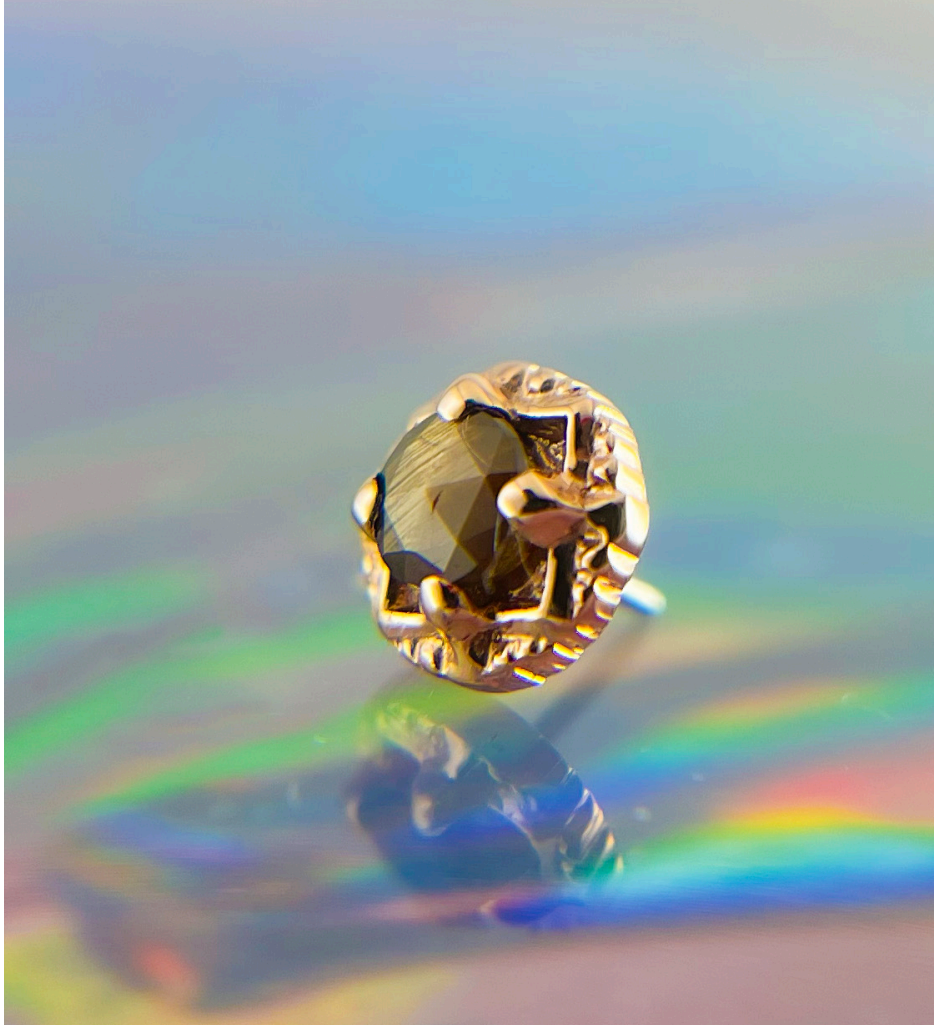
SIZE: 3.5MM  
ETHICALLY SOURCED NATURAL DIAMOND SIZE: 1.5MM  
ASTM F-138 IMPLANT-GRADE STEEL UNIVERSAL PIN  
CAST IN SOLID RECYCLED CERTIFIED 14K ROSE GOLD, NICKEL-FREE  
WHITE GOLD AND YELLOW GOLD



### CHRYSTOPRASE

WEIGHT: 0.25 GRAMS  
DIMENSIONS: 5MM X 5MM X 2.8 (INCLUDING GEM HEIGHT)  
STONE: 2MM CHRYSTOPRASE CABOCHON  
ASTM F-138 IMPLANT-GRADE STEEL UNIVERSAL PIN  
CAST IN SOLID RECYCLED CERTIFIED 14K ROSE GOLD, NICKEL-FREE  
WHITE GOLD AND YELLOW GOLD





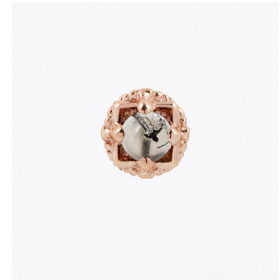
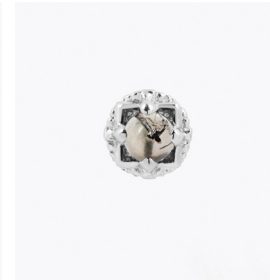
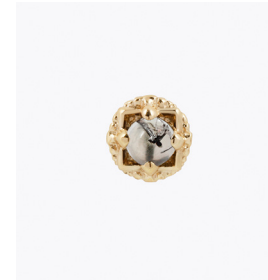
## OMEGA 24

SKU 5000-0035

2 STONES

3 COLORS

This stacked square entity uses a finely calibrated gemstone as the energy source for its dazzling visual display. OMEGA 24's textured outer ring frames the square four-point setting with light play from all angles, while a Tourmaline included Quartz cabochon and Zawi Sapphire shines at the center.



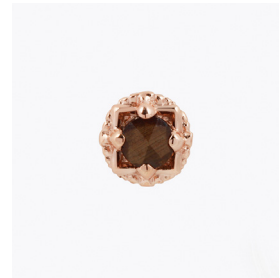
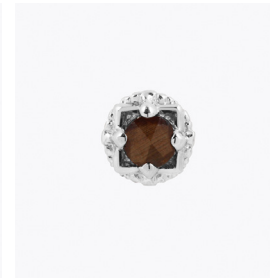
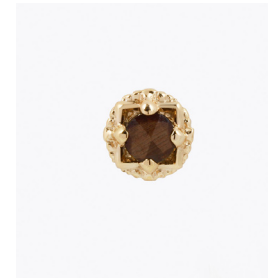
### TOURMALATED QUARTZ

SIZE: 5.2 X 5.2 X 3MM

STONE SIZE: 3MM

ASTM F-138 IMPLANT-GRADE STEEL UNIVERSAL PIN

CAST IN SOLID RECYCLED CERTIFIED 14K ROSE GOLD, NICKEL-FREE  
WHITE GOLD AND YELLOW GOLD



### ZAWADI SAPPHIRE

SIZE: 5.2 X 5.2 X 3MM

STONE SIZE: 3MM

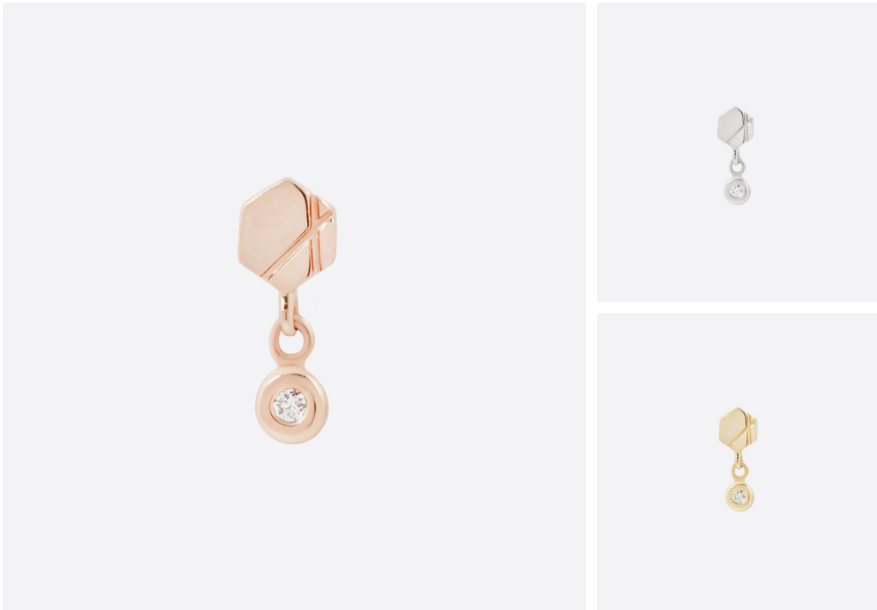
ASTM F-138 IMPLANT-GRADE STEEL UNIVERSAL PIN

CAST IN SOLID RECYCLED CERTIFIED 14K ROSE GOLD, NICKEL-FREE  
WHITE GOLD AND YELLOW GOLD

## HEX DIAMOND DROP

SKU 5000-0036  
3 COLORS

A delicate & minimal design featuring our popular Element 06 end, this subtle hexagon is cast in solid 14k gold with an added forward-facing 1mm genuine natural diamond drop to accentuate movement in the piece. The low-profile diamond drop setting is a smooth open-back bezel for maximum sparkle and wearability.



SIZE: 3MM X 7MM  
ETHICALLY SOURCED NATURAL DIAMOND SIZE: 1MM VS2 CLARITY  
G / H DIAMOND COLOR  
CAST IN SOLID RECYCLED CERTIFIED 14K ROSE GOLD, NICKEL-FREE WHITE GOLD AND YELLOW GOLD  
ASTM F-138 IMPLANT-GRADE STEEL UNIVERSAL PIN  
ALL TETHER NATURAL DIAMONDS ARE CONFLICT-FREE AND CONFIRMS ADHERENCE TO THE GUIDELINES OF THE KIMBERLEY PROCESS

CONVERGENCE 2022





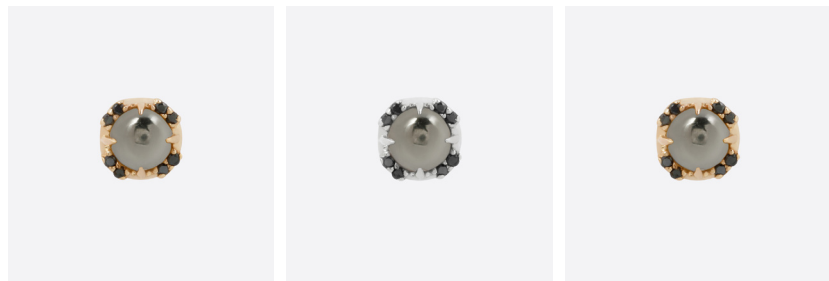
# GALAXIA

SKU 5000-0032

4 STONES

3 COLORS

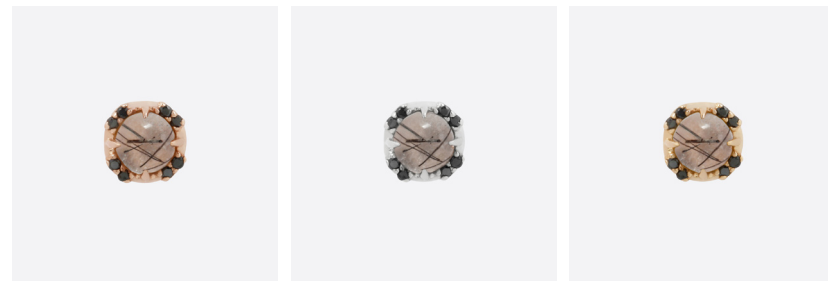
The Galaxia is a stunning prong setting with a custom cut Pyrite cabochon, Tourmalated Quartz cabochon, Rutilated Quartz cabochon or rose cut Zawadi Sapphire surrounded by eight 0.8mm genuine black diamonds.



## PYRITE

Pyrite is a powerful protection stone that shields against all forms of negative vibrations and energy.

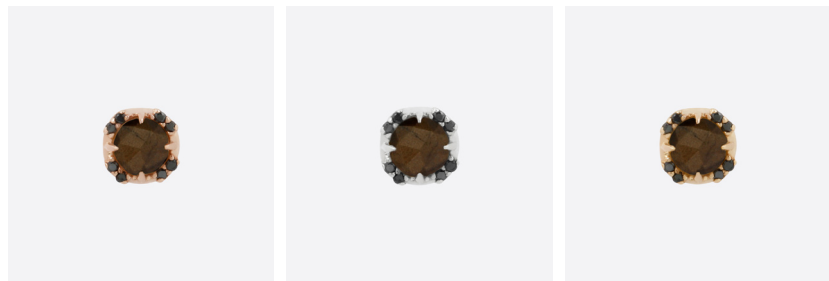
OVERALL SIZE: 5.5MM  
STONE SIZE: CENTER - 4MM / OUTER - 0.8MM  
CAST IN SOLID RECYCLED CERTIFIED 14K ROSE GOLD, NICKEL-FREE  
WHITE GOLD AND YELLOW GOLD  
ASTM F-138 IMPLANT-GRADE STEEL UNIVERSAL PIN



## TOURMALATED QUARTZ

Tourmalated Quartz is clear crystal quartz that has grown together with black tourmaline and beautifully showcases needles of tourmaline crossing through the stone.

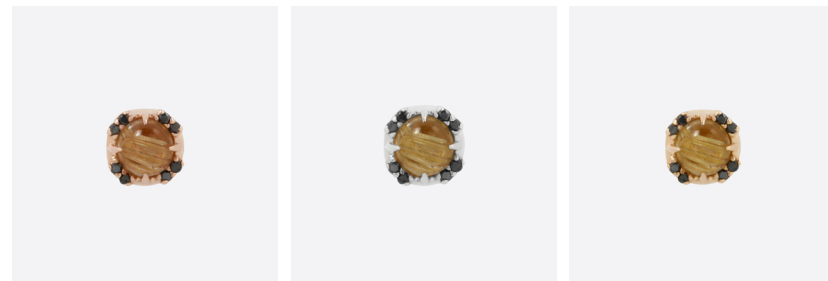
OVERALL SIZE: 5.5MM  
STONE SIZE: CENTER - 4MM / OUTER - 0.8MM  
CAST IN SOLID RECYCLED CERTIFIED 14K ROSE GOLD, NICKEL-FREE  
WHITE GOLD AND YELLOW GOLD  
ASTM F-138 IMPLANT-GRADE STEEL UNIVERSAL PIN



## ZAWADI SAPPHIRE

Zawadi Sapphires are found in Kenya and "Zawadi" is a Swahili word meaning gift.

OVERALL SIZE: 5.5MM  
STONE SIZE: CENTER - 4MM / OUTER - 0.8MM  
CAST IN SOLID RECYCLED CERTIFIED 14K ROSE GOLD, WHITE GOLD  
AND YELLOW GOLD  
STEEL UNIVERSAL PIN  
ASTM F-138 IMPLANT-GRADE STEEL UNIVERSAL PIN



## RUTILATED QUARTZ

Rutilated Quartz is a variety of Quartz that contains naturally occurring strands of Rutile. It is known for powerful cleansing and purifying effects.

OVERALL SIZE: 5.5MM  
STONE SIZE: CENTER - 4MM / OUTER - 0.8MM  
CAST IN SOLID RECYCLED CERTIFIED 14K ROSE GOLD, NICKEL-FREE  
WHITE GOLD AND YELLOW GOLD  
ASTM F-138 IMPLANT-GRADE STEEL UNIVERSAL PIN

## GEM BETA 04

SKU 5000-0011

4 STONES

3 COLORS

An evolution of our classic Beta 04 14K pin end featuring a 4mm custom pyramid cut stone in the center.



## PYRITE

Pyrite is a powerful protection stone that shields against all forms of negative vibrations and energy.

SIZE: 5.5MM  
STONE SIZE: 4MM

CAST IN SOLID RECYCLED CERTIFIED 14K ROSE GOLD, NICKEL-FREE  
WHITE GOLD AND YELLOW GOLD  
ASTM F-138 IMPLANT-GRADE STEEL UNIVERSAL PIN

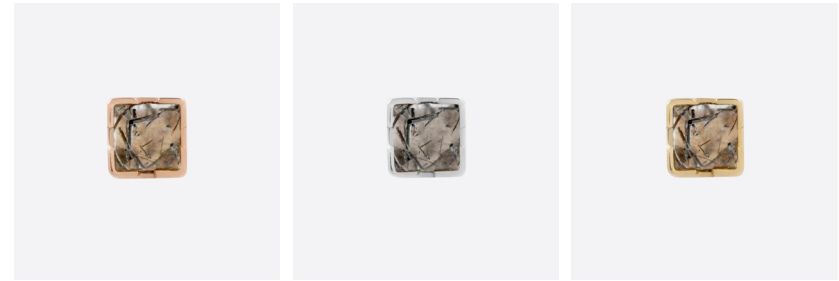


## ZAWADI SAPPHIRE

Zawadi Sapphires are found in Kenya and "Zawadi" is a Swahili word meaning gift.

SIZE: 5.5MM  
STONE SIZE: 4MM

CAST IN SOLID RECYCLED CERTIFIED 14K ROSE GOLD, NICKEL-FREE  
WHITE GOLD AND YELLOW GOLD  
STEEL UNIVERSAL PIN  
PIN COMPONENTS MADE BY INTRINSIC BODY JEWELRY FROM ASTM F-138 STEEL

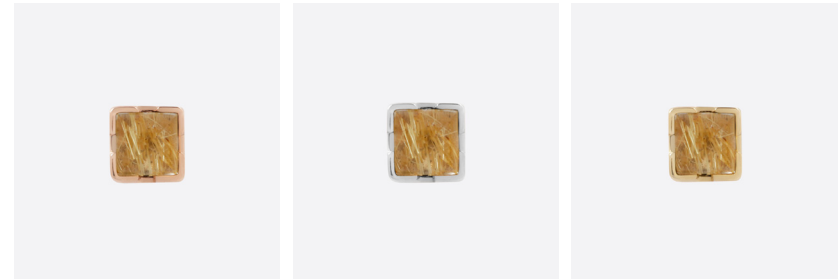


## TOURMALATED QUARTZ

Tourmalated Quartz is clear crystal quartz that has grown together with black tourmaline and beautifully showcases needles of tourmaline crossing through the stone.

SIZE: 5.5MM  
STONE SIZE: 4MM

CAST IN SOLID RECYCLED CERTIFIED 14K ROSE GOLD, NICKEL-FREE  
WHITE GOLD AND YELLOW GOLD  
ASTM F-138 IMPLANT-GRADE STEEL UNIVERSAL PIN



## RUTILATED QUARTZ

Rutilated Quartz is a variety of Quartz that contains naturally occurring strands of Rutile. It is known for powerful cleansing and purifying effects.

SIZE: 5.5MM  
STONE SIZE: 4MM

CAST IN SOLID RECYCLED CERTIFIED 14K ROSE GOLD, NICKEL-FREE  
WHITE GOLD AND YELLOW GOLD  
ASTM F-138 IMPLANT-GRADE STEEL UNIVERSAL PIN





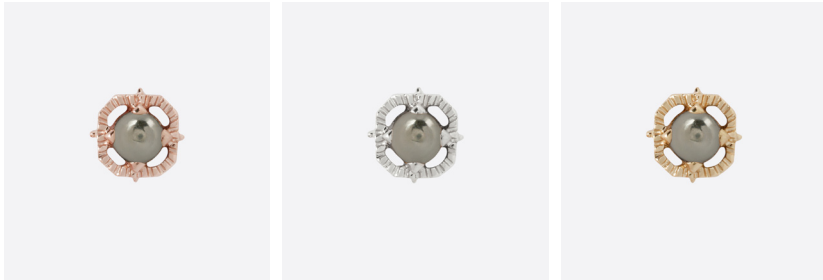
## GEM KAPPA 04

SKU 5000-0022

4 STONES

3 COLORS

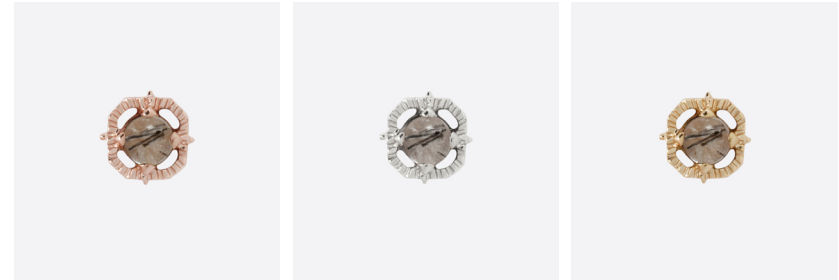
An evolution of our Kappa 04 14K pin end featuring a 4mm custom cut Pyrite, Zawadi Sapphire, Tourmalated Quartz or Rutilated Quartz in the center.



### PYRITE

Pyrite is a powerful protection stone that shields against all forms of negative vibrations and energy.

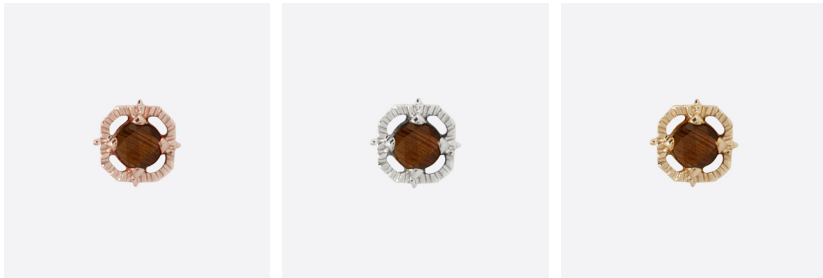
SIZE: 5.5MM  
STONE SIZE: 4MM  
CAST IN SOLID RECYCLED CERTIFIED 14K ROSE GOLD, NICKEL-FREE  
WHITE GOLD AND YELLOW GOLD  
ASTM F-138 IMPLANT-GRADE STEEL UNIVERSAL PIN



### TOURMALATED QUARTZ

Tourmalated Quartz is clear crystal quartz that has grown together with black tourmaline and beautifully showcases needles of tourmaline crossing through the stone.

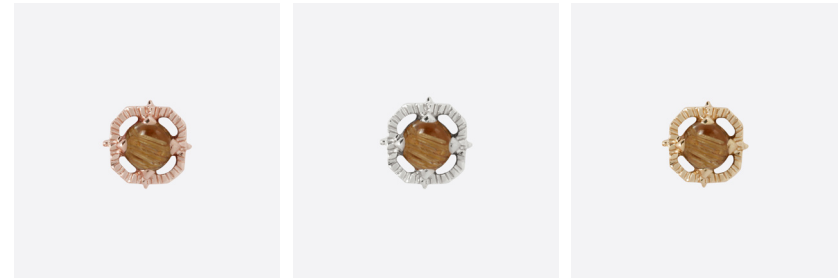
SIZE: 5.5MM  
STONE SIZE: 4MM  
CAST IN SOLID RECYCLED CERTIFIED 14K ROSE GOLD, NICKEL-FREE  
WHITE GOLD AND YELLOW GOLD  
ASTM F-138 IMPLANT-GRADE STEEL UNIVERSAL PIN



### ZAWADI SAPPHIRE

Zawadi Sapphires are found in Kenya and "Zawadi" is a Swahili word meaning gift.

SIZE: 5.5MM  
STONE SIZE: 4MM  
CAST IN SOLID RECYCLED CERTIFIED 14K ROSE GOLD, NICKEL-FREE  
WHITE GOLD AND YELLOW GOLD  
ASTM F-138 IMPLANT-GRADE STEEL UNIVERSAL PIN



### RUTILATED QUARTZ

Rutilated Quartz is a variety of Quartz that contains naturally occurring strands of Rutile. It is known for powerful cleansing and purifying effects.

SIZE: 5.5MM  
STONE SIZE: 4MM  
CAST IN SOLID RECYCLED CERTIFIED 14K ROSE GOLD, NICKEL-FREE  
WHITE GOLD AND YELLOW GOLD  
ASTM F-138 IMPLANT-GRADE STEEL UNIVERSAL PIN



# CAST SHAPES



## UMBRA

SKU 5000-0039  
3 COLORS

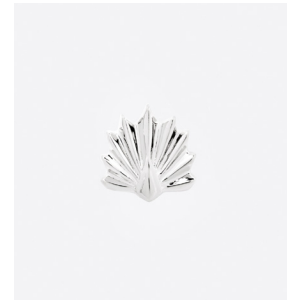
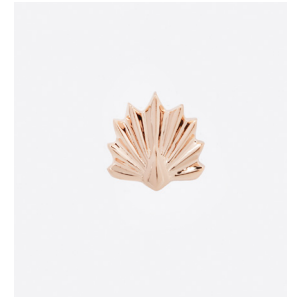
Golden rays of light emerge from the darkness, carving across the landscape of Umbra. This solid 14k gold crescent moon's surface is an explosion of texture that shines from every angle.



WEIGHT: 0.25 GRAMS  
DIMENSIONS: 5.2MM 5.9MM X 1.2MM  
CAST IN SOLID RECYCLED CERTIFIED  
14K ROSE GOLD, NICKEL-FREE WHITE  
GOLD AND YELLOW GOLD  
ASTM F-138 IMPLANT-GRADE STEEL  
UNIVERSAL PIN

## DECO

SKU 5000-0038  
3 COLORS



WEIGHT: 0.42 GRAMS  
DIMENSIONS: 6MM X 6MM X 2MM  
CAST IN SOLID RECYCLED CERTIFIED 14K  
ROSE GOLD, NICKEL-FREE WHITE GOLD AND  
YELLOW GOLD  
ASTM F-138 IMPLANT-GRADE STEEL  
UNIVERSAL PIN

DECO, a tribute to Arts Décoratifs, the Art Deco era. Inspired by modern design and bold, simplified geometric forms, this solid gold threadless end's fan shape explodes outward with beams of texture surrounding a minimalist Tether diamond icon.



## TERRA

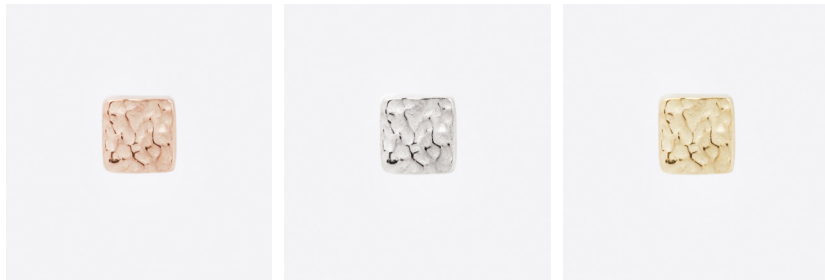
TERRA represents the organic side of our ELEMENT collection. In contrast to the original high-polish finish, these pieces feature solid gold threadless triangle, hexagon, or square shapes in a uniquely textured aesthetic.



### TERRA 03

SKU 5000-0043  
3 COLORS

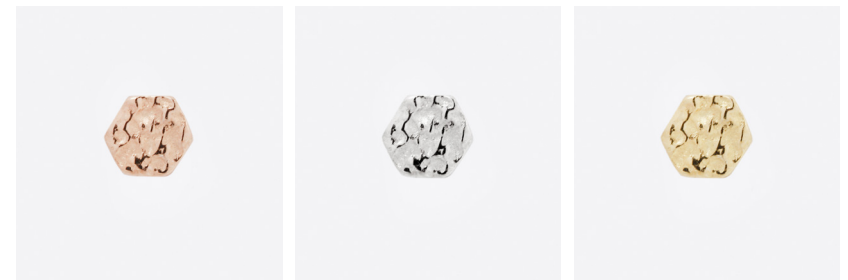
WEIGHT: 0.09 GRAMS  
DIMENSIONS: 2.7MM X 2.7MM X 1.25MM  
CAST IN SOLID RECYCLED CERTIFIED 14K ROSE GOLD,  
NICKEL-FREE WHITE GOLD AND YELLOW GOLD  
ASTM F-138 IMPLANT-GRADE STEEL UNIVERSAL PIN



### TERRA 04

SKU 5000-0042  
3 COLORS

WEIGHT: 0.14 GRAMS  
DIMENSIONS: 3.1MM X 3.1MM X 1.3MM  
CAST IN SOLID RECYCLED CERTIFIED 14K ROSE GOLD, NICKEL-  
FREE WHITE GOLD AND YELLOW GOLD  
ASTM F-138 IMPLANT-GRADE STEEL UNIVERSAL PIN

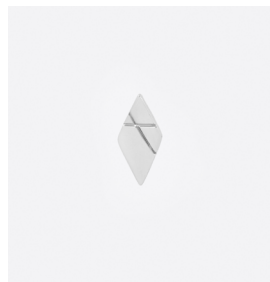
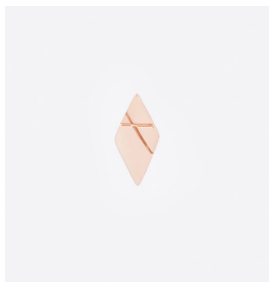


### TERRA 06

SKU 5000-0042  
3 COLORS

WEIGHT: 0.09 GRAMS  
DIMENSIONS: 2.7MM X 2.7MM X 1.25MM  
CAST IN SOLID RECYCLED CERTIFIED 14K ROSE GOLD,  
NICKEL-FREE WHITE GOLD AND YELLOW GOLD  
ASTM F-138 IMPLANT-GRADE STEEL UNIVERSAL PIN





## ELEMENT 02

SKU 5000-0045  
3 COLORS

Parallelism with a hint of chaos defines the ELEMENT 02 gold threadless end. Engraved intersecting lines cross this diamond-shaped addition to our solid gold ELEMENT collection.

WEIGHT: 0.14 GRAMS

DIMENSIONS: 2.9MM X 5.9MM X 1.3MM

CAST IN SOLID RECYCLED CERTIFIED 14K ROSE GOLD, NICKEL-FREE WHITE GOLD AND YELLOW GOLD  
ASTM F-138 IMPLANT-GRADE STEEL UNIVERSAL PIN



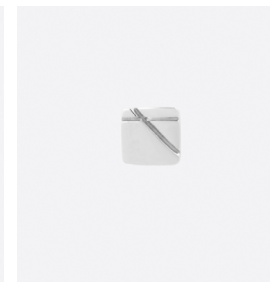
## ELEMENT 03

SKU 5000-0028  
3 COLORS

Part of our new elemental collection, this subtle, flat triangle is cast in solid 14k gold. It features 2 linear accents and would look great in a myriad of piercings.

SIZE: 4.5MM

CAST IN SOLID RECYCLED CERTIFIED 14K ROSE GOLD, NICKEL-FREE WHITE GOLD AND YELLOW GOLD  
ASTM F-138 IMPLANT-GRADE STEEL UNIVERSAL PIN



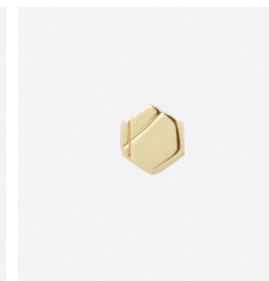
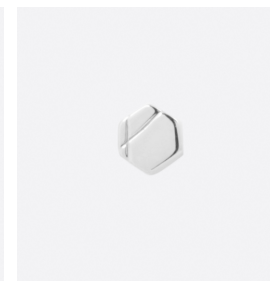
## ELEMENT 04

SKU 5000-0029  
3 COLORS

Part of our new elemental collection, this subtle, flat square is cast in solid 14k gold. It features 2 linear accents and would look great in a myriad of piercings.

SIZE: 3MM X 3MM

CAST IN SOLID RECYCLED CERTIFIED 14K ROSE GOLD, WHITE GOLD AND YELLOW GOLD  
ASTM F-138 IMPLANT-GRADE STEEL UNIVERSAL PIN



## ELEMENT 06

SKU 5000-0030  
3 COLORS

Part of our new elemental collection, this subtle, flat hexagon is cast in solid 14k gold. It features 2 linear accents and would look great in a myriad of piercings.

SIZE: 3MM

CAST IN SOLID RECYCLED CERTIFIED 14K ROSE GOLD, NICKEL-FREE WHITE GOLD AND YELLOW GOLD  
ASTM F-138 IMPLANT-GRADE STEEL UNIVERSAL PIN



CONVERGENCE 2022

# CHARMS & CHAIN ATTACHMENTS



## ZETA 02 CHARM

SKU 4101-0004  
3 COLORS

Zeta 02 as a fixed charm attachment! Great to hang from a seam ring with a very delicate profile.

WEIGHT: 0.16 GRAMS  
DIMENSIONS: 3.5MM X 4.2MM BODY  
JUMP FITS UP TO 16G  
CAST IN SOLID RECYCLED CERTIFIED 14K  
ROSE GOLD, NICKEL-FREE WHITE GOLD  
AND YELLOW GOLD



## ZETA 03 CHARM

SKU 4101-0005  
3 COLORS

Zeta 03 as a fixed charm attachment! Great to hang from a seam ring with a very delicate profile.

WEIGHT: 0.19 GRAMS  
DIMENSIONS: 4.1MM X 4.1MM BODY  
JUMP FITS UP TO 16G  
CAST IN SOLID RECYCLED CERTIFIED  
14K ROSE GOLD, WHITE GOLD AND  
YELLOW GOLD

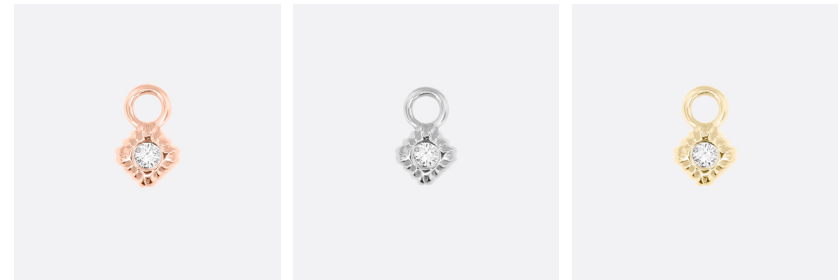


## OMEGA 00 CHARM

SKU 4101-0003  
3 COLORS

Concentric gold circles rippling like waves on a pond surround the 1.5mm natural diamond accent of our Omega 00 Charm. This thin, delicate profile hangs perfectly from a seam ring or 16ga bar.

WEIGHT: 0.12 GRAMS  
DIMENSIONS: 3.6MM X 3.6MM BODY  
JUMP FITS UP TO 16G  
CAST IN SOLID RECYCLED CERTIFIED 14K  
ROSE GOLD, NICKEL-FREE WHITE GOLD  
AND YELLOW GOLD



## OMEGA 04 CHARM

SKU 4101-0002  
3 COLORS

A complex form of contrasting material and texture, the OMEGA 04 charm's gold and carbon lattice are composed of a 1.5mm diamond flush set into a polished plane of solid gold, surrounded by deep rays that reflect light from every angle. This thin, delicate profile hangs perfectly from a seam ring or 16ga bar.

WEIGHT: 0.14 GRAMS  
DIMENSIONS: 3.5MM X 3.5MM BODY  
JUMP FITS UP TO 16G  
CAST IN SOLID RECYCLED CERTIFIED 14K  
ROSE GOLD, NICKEL-FREE WHITE GOLD  
AND YELLOW GOLD



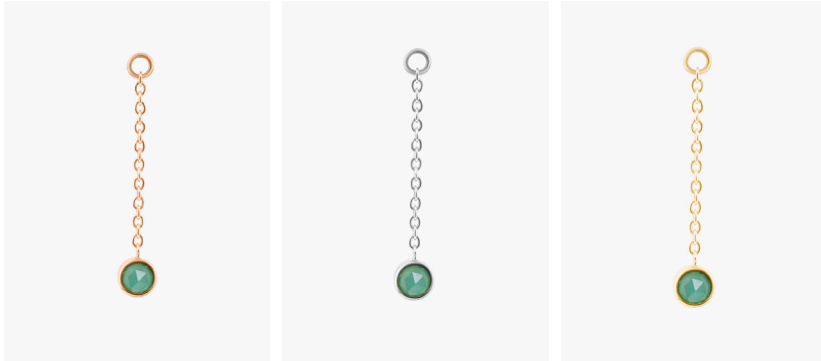
## NIKO

SKU 4102-0001

2 STONES

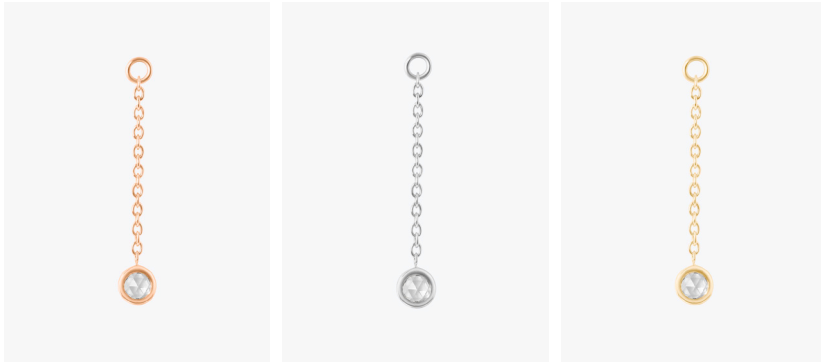
3 COLORS

Our Niko Chain Charm floats a beautiful 3mm rose-cut Chrysoprase gem and White Topaz from 16mm (5/8") of delicate gold chain. The slim bezel's open back helps this shooting star catch every bit of light with movement.



### CHRYSTOPRASE

WEIGHT: 0.22 GRAMS  
 DIMENSIONS: 17MM CHAIN LENGTH, 3.8MM BODY DIAMETER  
 JUMP FITS UP TO A 16G  
 OVERALL HANG ~22MM  
 GEM SIZE: 3MM  
 CAST IN SOLID RECYCLED CERTIFIED 14K ROSE GOLD, NICKEL-FREE WHITE GOLD AND YELLOW GOLD



### WHITE TOPAZ

WEIGHT: 0.22 GRAMS  
 DIMENSIONS: 17MM CHAIN LENGTH, 3.8MM BODY DIAMETER  
 JUMP FITS UP TO A 16G  
 OVERALL HANG ~22MM  
 GEM SIZE: 3MM  
 CAST IN SOLID RECYCLED CERTIFIED 14K ROSE GOLD, NICKEL-FREE WHITE GOLD AND YELLOW GOLD

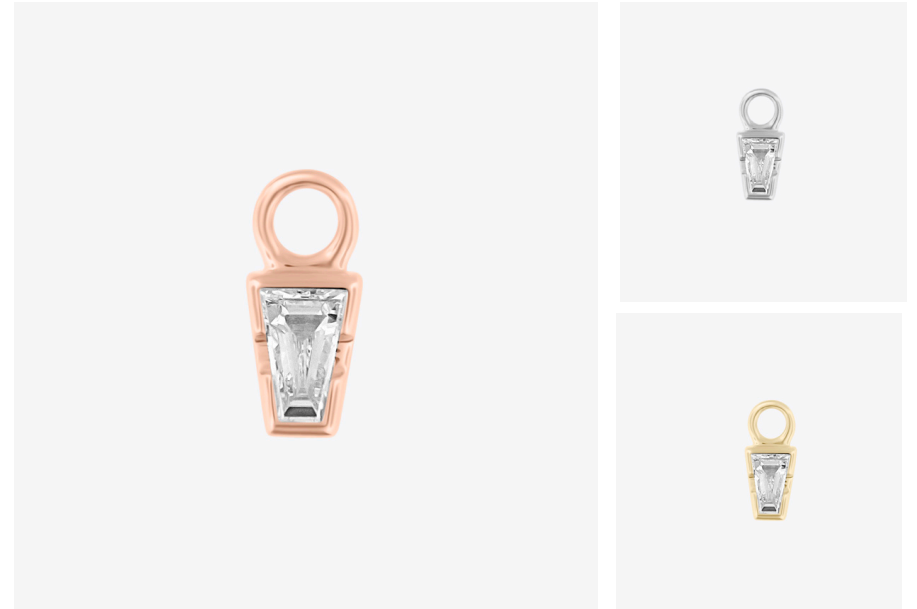
## LINDA

SKU 4101-0001

1 STONE

3 COLORS

The Linda charm's showstopper tapered baguette diamond is framed by a notched low-rise backless gold setting, allowing maximum light play from all angles. This thin, delicate profile hangs perfectly from a seam ring or 16ga bar.



WEIGHT: 0.11 GRAMS  
 DIMENSIONS: 3.9MM X 2.8MM BODY  
 JUMP FITS UP TO A 16G  
 GEM SIZE: 2X3MM  
 CAST IN SOLID RECYCLED CERTIFIED 14K ROSE GOLD, NICKEL-FREE WHITE GOLD AND YELLOW GOLD

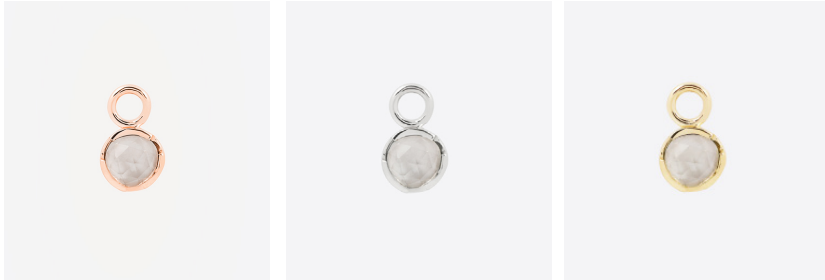
## LUKA

SKU 4101-0008

8 STONES

3 COLORS

Our Luka charm is an exercise in simplicity for the sake of the stone. The slim uniquely notched bezel and open back help this shooting star catch every bit of light with movement.



### AVAILABLE WITH EIGHT STONES

WHITE TOPAZ

EMERALD

GREEN TOURMALINE

LONDON BLUE TOPAZ

AMETHYST

SMOKEY QUARTZ

RED GARNET

CITRINE

WEIGHT: 0.14 GRAMS

DIMENSIONS: 3.8MM (BODY)

GEM: 3MM

CAST IN SOLID RECYCLED CERTIFIED 14K ROSE GOLD, WHITE GOLD AND YELLOW GOLD

JUMP FITS UP TO 16G

AVAILABLE IN 14K ROSE GOLD, NICKEL-FREE WHITE GOLD AND YELLOW GOLD

## EZRA

SKU 4102-0002

3 COLORS

Two etched 3mm solid gold cubes hang from our Ezra Charm's delicate staggered chains.



WEIGHT: 0.36 GRAMS

DIMENSIONS: 16MM & 22MM CHAIN LENGTHS, 3MM CUBES

JUMP FITS UP TO 16G

OVERALL HANG ~26MM

AVAILABLE IN 14K ROSE GOLD, WHITE GOLD AND YELLOW GOLD

## PYRA

SKU 4102-0002

3 COLORS

Pyra is a perfect cone, solid gold from directrix to apex. This eye-catching minimalist geometric charm is available in 14k yellow, rose, and nickel-free white gold.



WEIGHT: 0.14 GRAMS

DIMENSIONS: 2.8MM X 4MM (BODY)

JUMP FITS UP TO 16G

CAST IN SOLID RECYCLED CERTIFIED 14K ROSE GOLD, NICKEL-FREE WHITE GOLD AND YELLOW GOLD



## REIDUN 1

SKU 4103-0001  
3 COLORS

Our gold Reidun 1 solo accent chain holds a delicate 4mm solid gold hexagon charm dancing across its 24mm length.



WEIGHT: 0.3 GRAMS

DIMENSIONS: 24MM CHAIN LENGTH, 4MM HEX CHARM

JUMP FITS UP TO 16 GAUGE

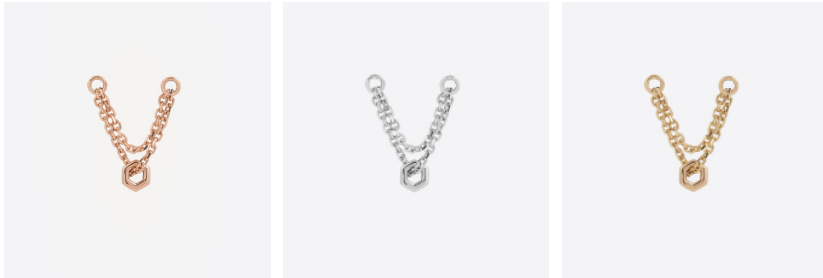
AVAILABLE IN 14K ROSE GOLD, WHITE GOLD AND YELLOW GOLD

## REIDUN 2

SKU 4103-0003  
3 COLORS

Our gold Reidun 2 dual accent chain holds a delicate 4mm solid gold hexagon charm dancing across its 26mm chain.

The total wearable width, set by the shorter chain, is 20mm.



WEIGHT: 0.45 GRAMS

DIMENSIONS: 20MM & 26MM CHAIN LENGTHS, 4MM HEX CHARM

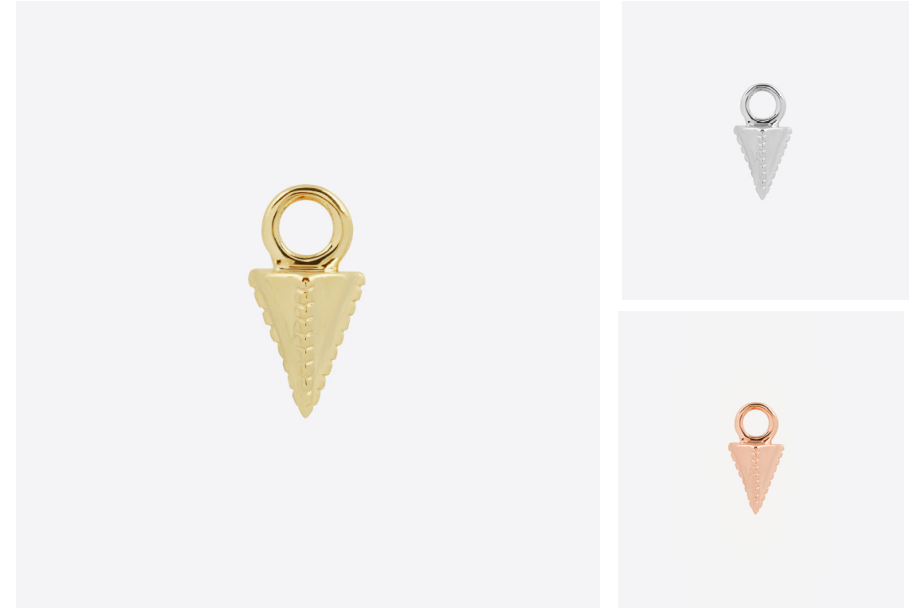
JUMP FITS UP TO 16 GAUGE

AVAILABLE IN 14K ROSE GOLD, NICKEL-FREE WHITE GOLD AND YELLOW GOLD

## AEGIS

SKU 4101-0007  
3 COLORS

Aegis is a perfect cone divided into quadrants by delicate milgrain borders. This eye-catching textured charm is available in 14k yellow, rose, and nickel-free white gold.



WEIGHT: 0.18 GRAMS

DIMENSIONS: 3.5MM X 4.5MM (BODY)

JUMP FITS UP TO 16G

CAST IN SOLID RECYCLED CERTIFIED 14K ROSE GOLD, NICKEL-FREE WHITE GOLD AND YELLOW GOLD



CONVERGENCE 2022

# SIGNATURE CLICKERS

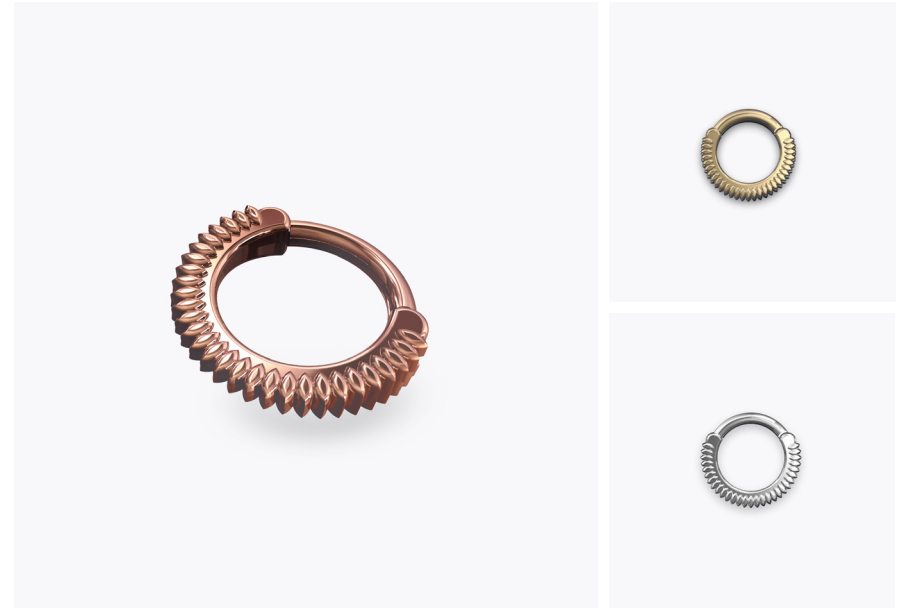




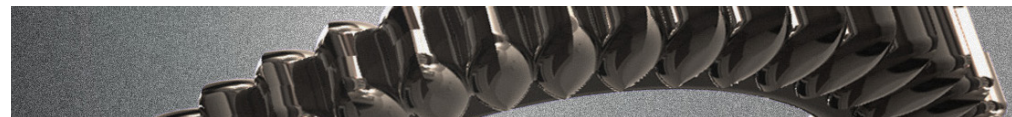
## GIGER

SKU 1000-0043  
3 COLORS

Vaguely organic and firmly mechanical, this clicker's complex tapered and segmented body are nods to the work of master biomechanical designer H.R. Giger.



2 DIAMETER SIZES - 8MM / 9.5MM  
CAST IN 316L STAINLESS STEEL  
AVAILABLE IN 14 & 16 GAUGE  
ION-PLATED 18K ROSE GOLD, 18K YELLOW GOLD,  
AND HIGH-POLISHED NAKED STEEL

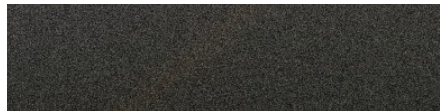
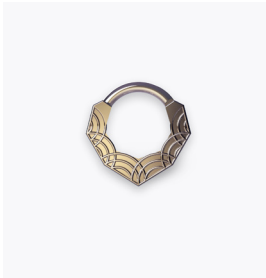
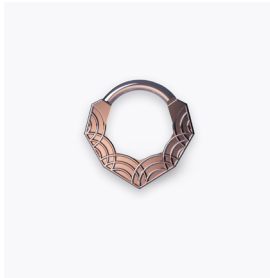




## ERTE

SKU 1000-0040  
3 COLORS

A border of overlapping concentric curves creates interest from simplicity in this homage to the Art Deco master illustrator, sculptor, and designer Romain de Tiroff, who worked under the pseudonym Erté.



2 DIAMETER SIZES - 8MM / 9.5MM  
CAST IN 316L STAINLESS STEEL  
AVAILABLE IN 14 & 16 GAUGE  
ION-PLATED 18K ROSE GOLD, 18K YELLOW GOLD,  
AND HIGH-POLISHED NAKED STEEL

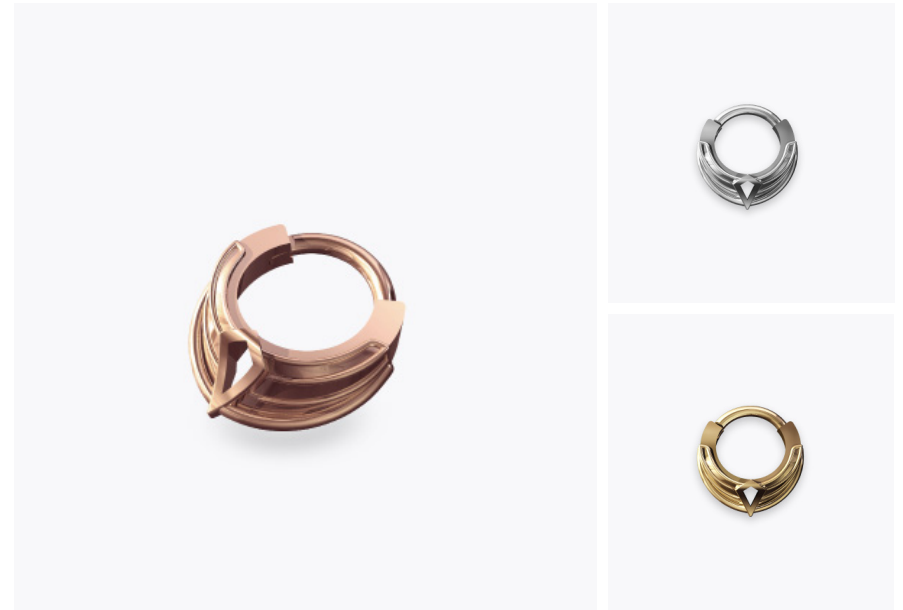
CONVERGENCE 2022



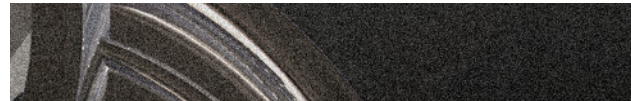
## EPOCH

SKU 1000-0044  
3 COLORS

A unique form from all angles, this assemblage of tiered curves cuts away to reveal a lone polygon piercing the center of our Epoch clicker.



2 DIAMETER SIZES - 8MM / 9.5MM  
CAST IN 316L STAINLESS STEEL  
AVAILABLE IN 14 & 16 GAUGE  
ION-PLATED 18K ROSE GOLD, 18K YELLOW GOLD, AND  
HIGH-POLISHED NAKED STEEL

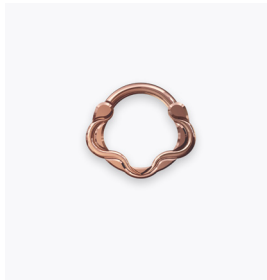




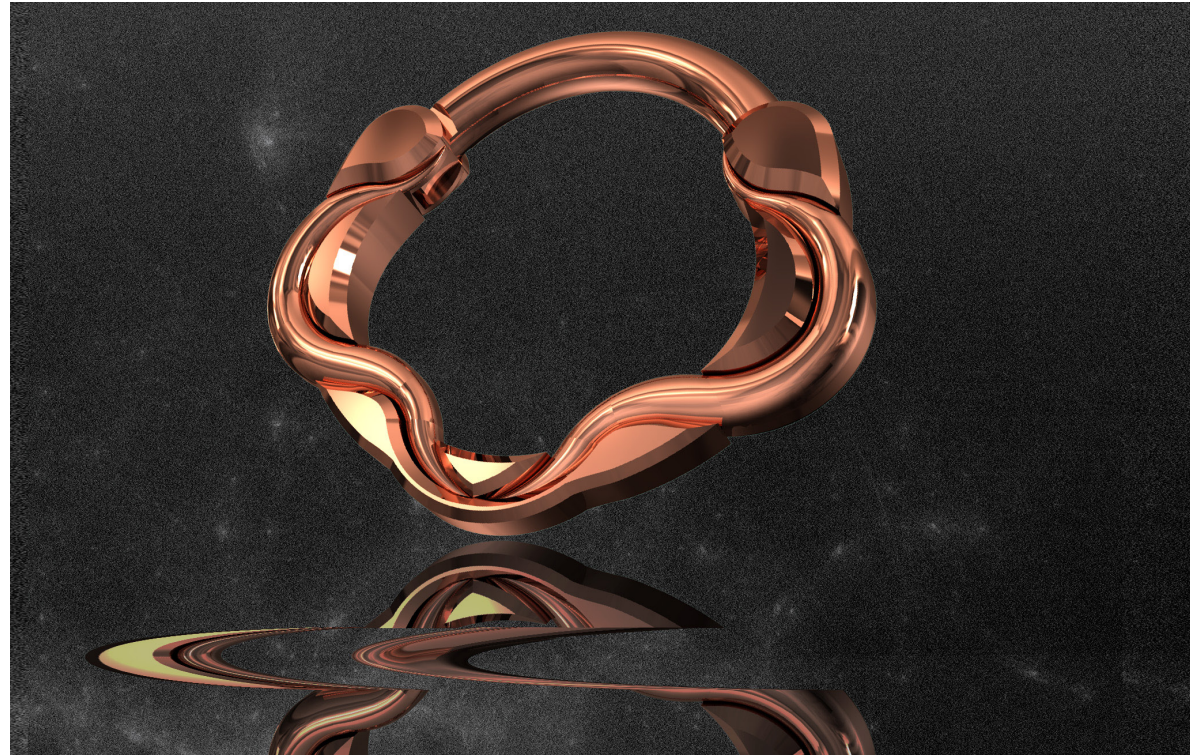
## MUCHA

SKU 1000-0042  
3 COLORS

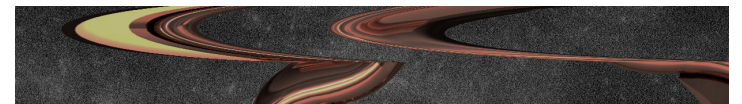
Gorgeous curves reminiscent of draped fabric fall across the front of our Art Nouveau-inspired Mucha clicker.



2 DIAMETER SIZES - 8MM / 9.5MM  
CAST IN 316L STAINLESS STEEL  
AVAILABLE IN 14 & 16 GAUGE  
ION-PLATED 18K ROSE GOLD, 18K YELLOW GOLD,  
AND HIGH-POLISHED NAKED STEEL



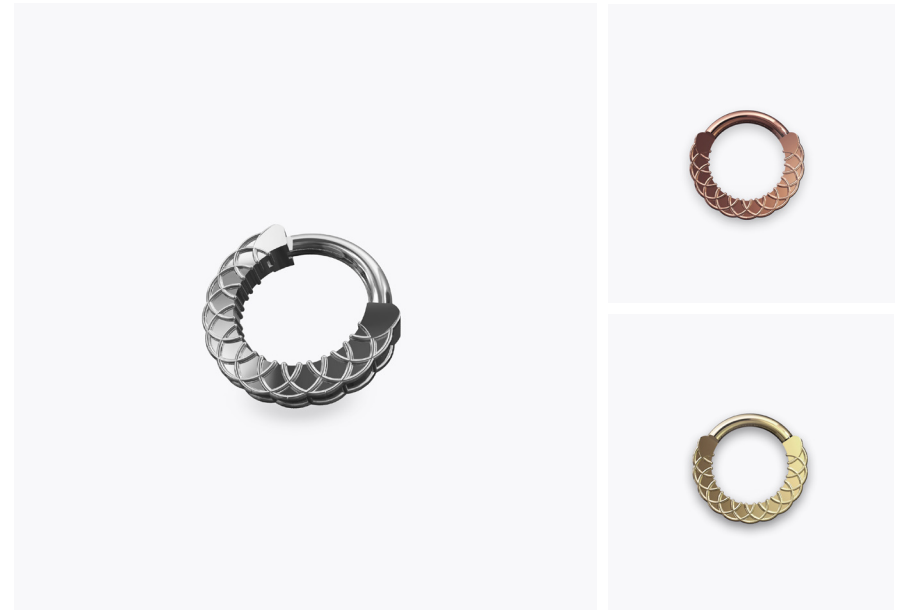
CONVERGENCE 2022



## SOLARE

SKU 1000-0041  
3 COLORS

A series of interconnected circular details hinting at sacred geometry hover above the Solare clicker's body, forming a scalloped silhouette.



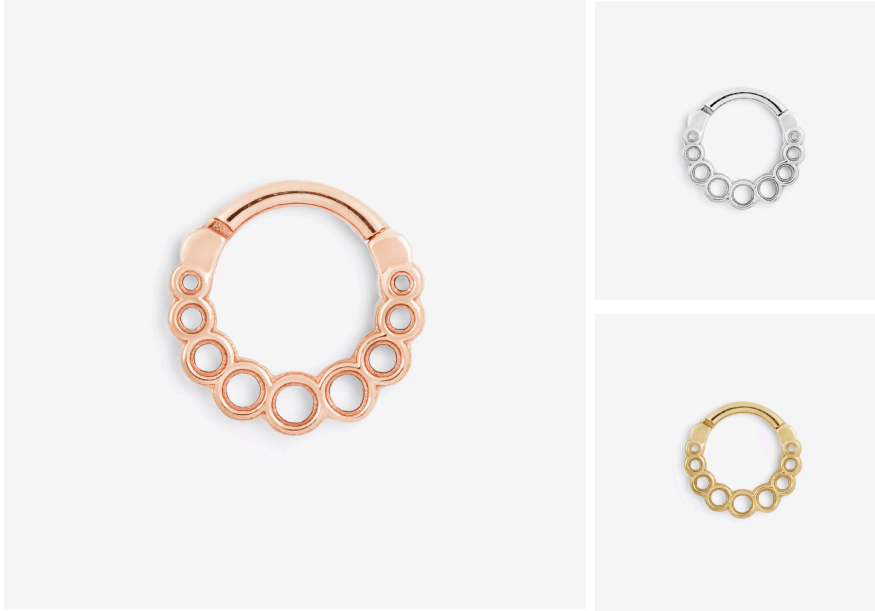
2 DIAMETER SIZES - 8MM / 9.5MM  
CAST IN 316L STAINLESS STEEL  
AVAILABLE IN 14 & 16 GAUGE  
ION-PLATED 18K ROSE GOLD, 18K YELLOW GOLD,  
AND HIGH-POLISHED NAKED STEEL



## POD

SKU 1000-0039  
3 COLORS

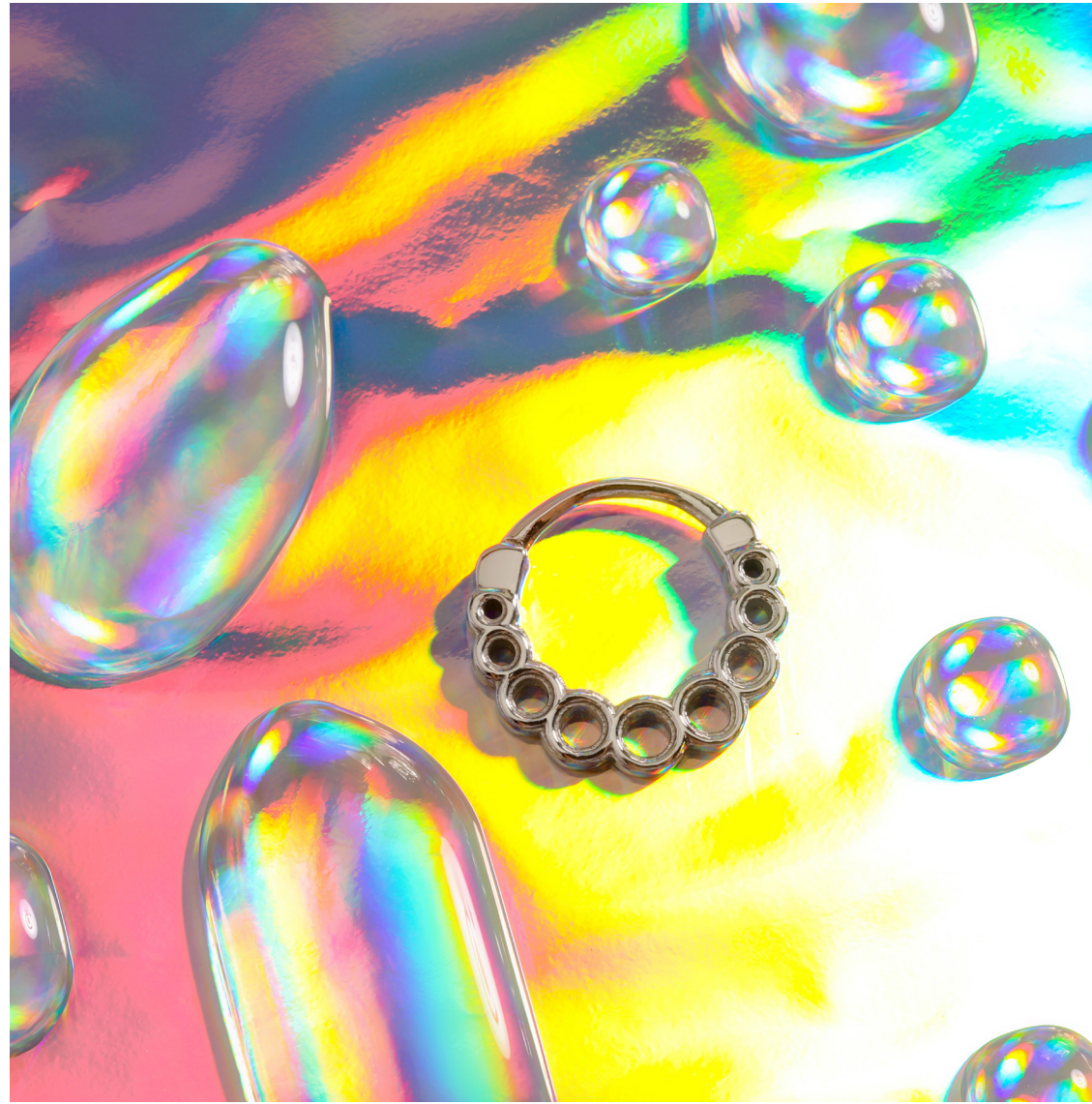
Nine arching graduated circles create a playful border of pods in this new lightweight design. The Pod clicker allows visibility through the negative spaces and manages to be distinct and subtle at the same time. The ability to see through the design makes it ideal for placing in the front of a septum stack but it's slim-design makes it versatile for wearing in ear piercings, as well.



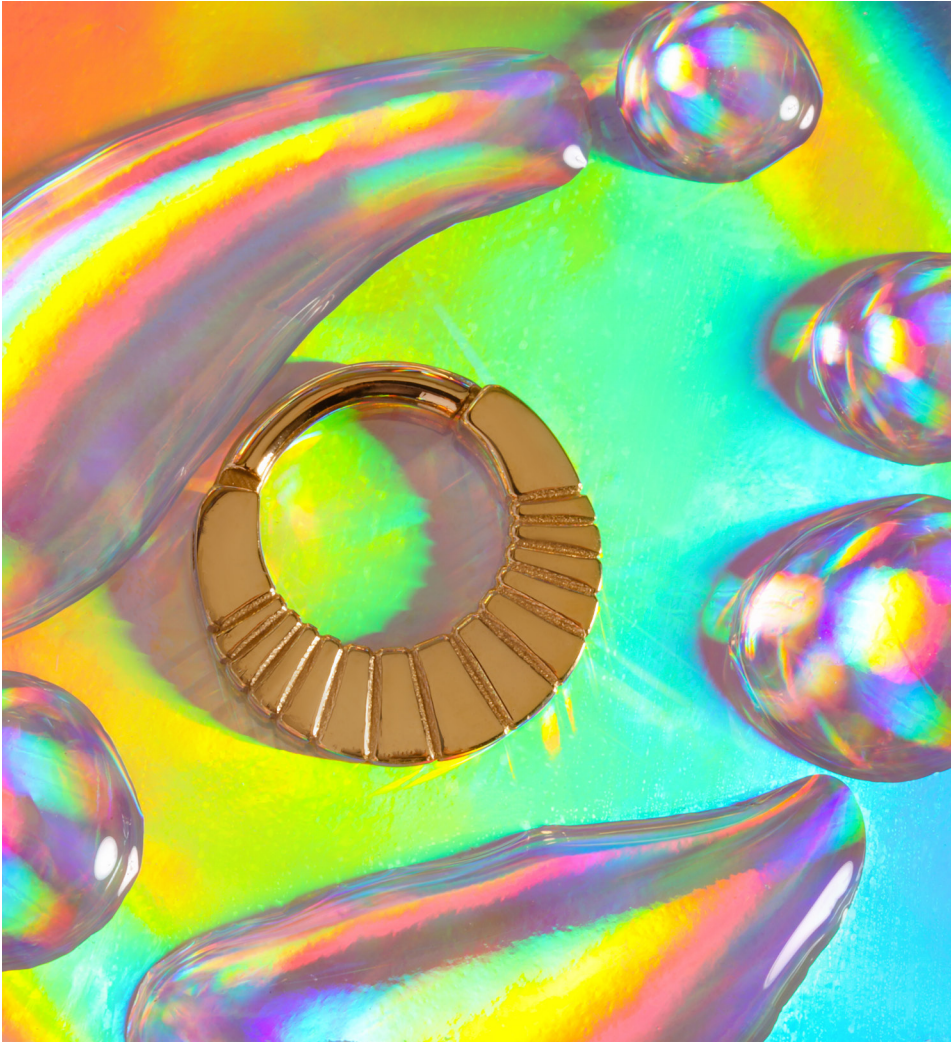
16 GAUGE  
8MM - 5/16"

14 GAUGE  
8MM - 5/16"

CAST IN 316L STAINLESS STEEL  
AVAILABLE IN ION-PLATED 18K ROSE GOLD, 18K YELLOW GOLD, AND  
HIGH-POLISHED NAKED STEEL



CONVERGENCE 2022



## PRISM

SKU 1000-0038  
3 COLORS

A new iteration of our shield-like slim clicker, the Prism is destined to be a classic. Radial, high-polish segments increase in thickness convening in the center for a symmetrical luster that is mirrored on the reverse. The low-profile of the Prism makes it great for a septum stack but would also look flawless on its own.



16 GAUGE  
8MM - 5/16"  
9.5MM - 3/8"

14 GAUGE  
8MM - 5/16"  
9.5MM - 3/8"

CAST IN 316L STAINLESS STEEL  
AVAILABLE IN ION-PLATED 18K ROSE GOLD, 18K YELLOW GOLD, AND  
HIGH-POLISHED NAKED STEEL





## REEF

SKU 1000-0037  
3 COLORS

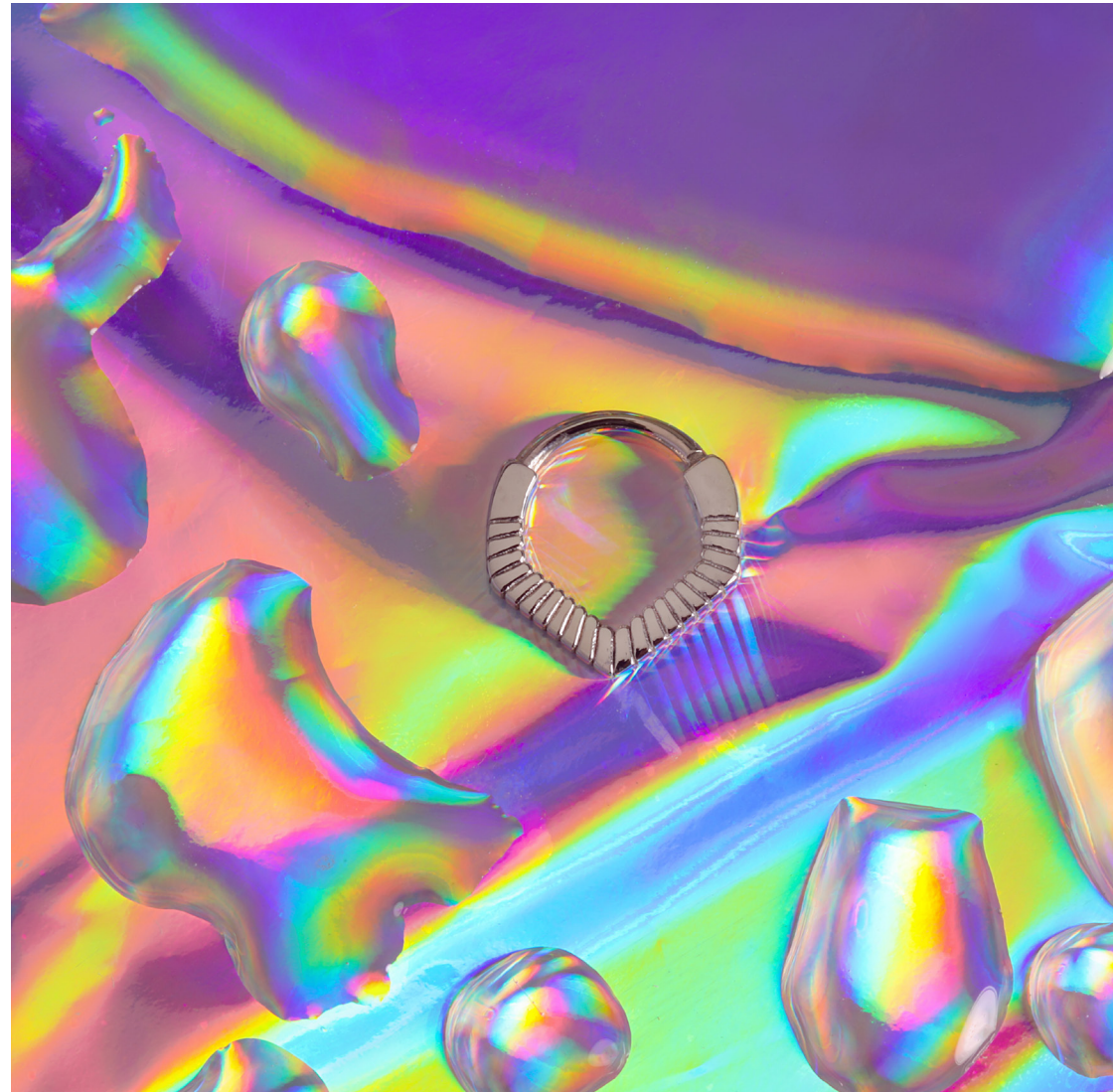
Uniform lines adorn this angular, iconic Tether pointed clicker. The Reef clicker has shell-like textured ribs that wrap all the way around the design leaving no surface forgotten. This piece is as versatile as it is striking and will make a beautiful centerpiece in a septum or a slim, accent piece along the edge of an ear.



16 GAUGE  
8MM - 5/16"  
9.5MM - 3/8"

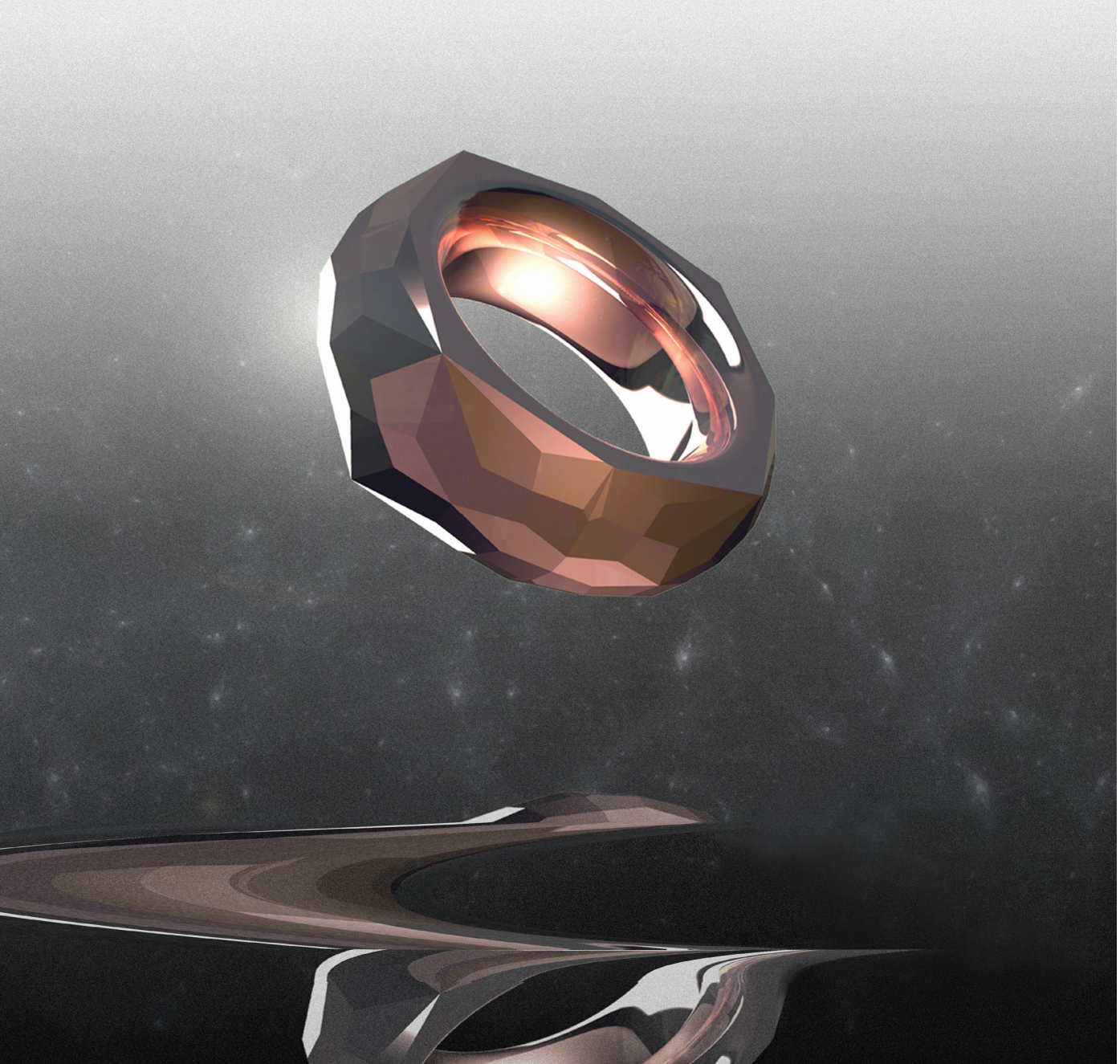
14 GAUGE  
8MM - 5/16"  
9.5MM - 3/8"

CAST IN 316L STAINLESS STEEL  
AVAILABLE IN ION-PLATED 18K ROSE GOLD, 18K YELLOW GOLD, AND  
HIGH-POLISHED NAKED STEEL



CONVERGENCE 2022





CONVERGENCE 2022

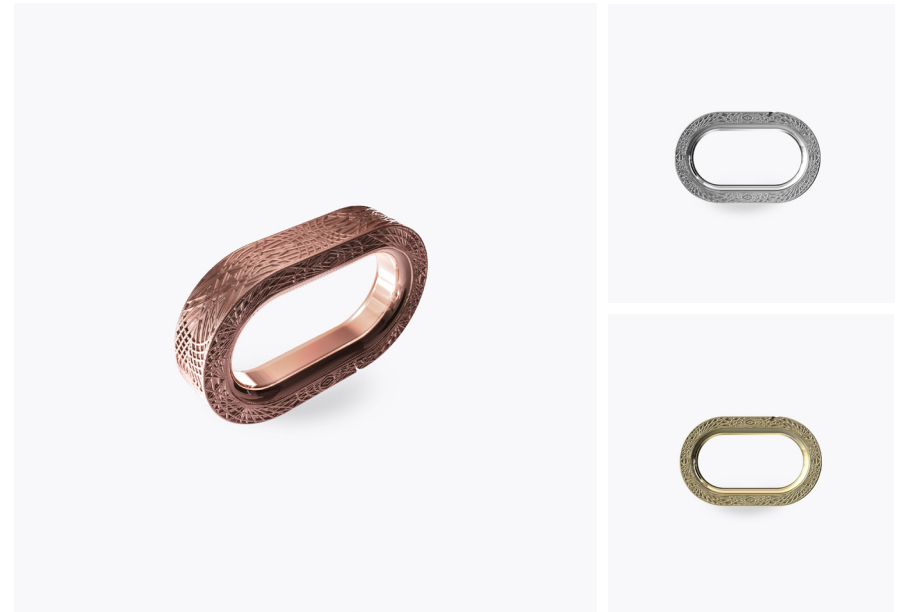
# WEIGHTS



## ARTIFACT

SKU 1100-0008  
3 COLORS

Standing waves of resonance in solid metal fully immerse the elliptical surface of Tether's hinged Artifact weights. An intricate pattern on all exterior surfaces contrasts the high polish rounded stillness of the interior wear area.



30MM X 15MM INNER DIAMETER, 40.5MM X 25.5MM OUTER DIAMETER  
MUST BE AT LEAST 0 GAUGE OR LARGER TO WEAR  
CAST IN 316L STAINLESS STEEL  
AVAILABLE IN ION-PLATED 18K YELLOW GOLD, 18K ROSE GOLD AND NAKED STEEL

CONVERGENCE 2022



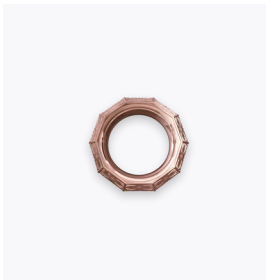


## SEED

SKU 1100-0007

3 COLORS

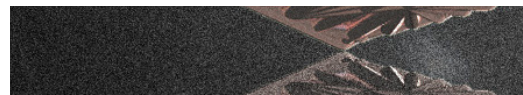
Standing waves of resonance in solid metal fully immerse the faceted decagon surface of Tether's hinged Seed weights. An intricate pattern on all exterior surfaces contrasts the high polish rounded stillness of the interior wear area.



DIMENSIONS: 13MM INNER DIAMETER X 20.4MM OUTER DIAMETER  
MUST BE AT LEAST 2 GAUGE OR LARGER TO WEAR  
CAST IN 316L STAINLESS STEEL  
AVAILABLE IN ION-PLATED 18K YELLOW GOLD, 18K ROSE GOLD AND NAKED STEEL



CONVERGENCE 2022

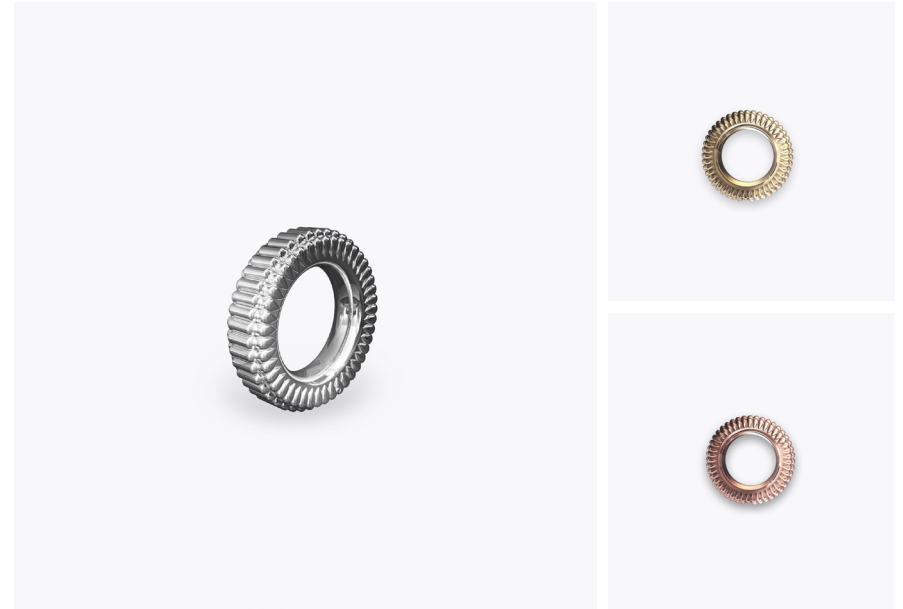
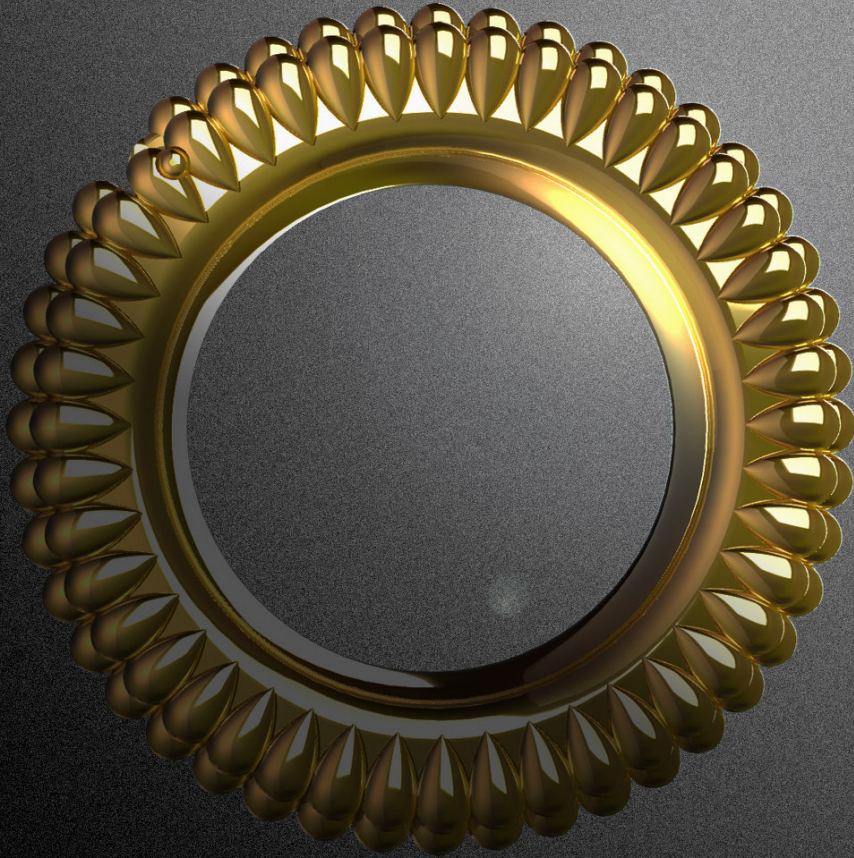




## REVERIE

SKU 1100-0010  
3 COLORS

An elaborate daydream of radial texture reflecting light at every angle surrounds our Reverie hinged weights' comfortably rounded wear surface.



DIMENSIONS: 13MM INNER DIAMETER X 22MM OUTER DIAMETER  
MUST BE AT LEAST 2 GAUGE OR LARGER TO WEAR  
CAST IN 316L STAINLESS STEEL  
AVAILABLE IN ION-PLATED 18K YELLOW GOLD, 18K ROSE GOLD AND NAKED STEEL



## PARADOX

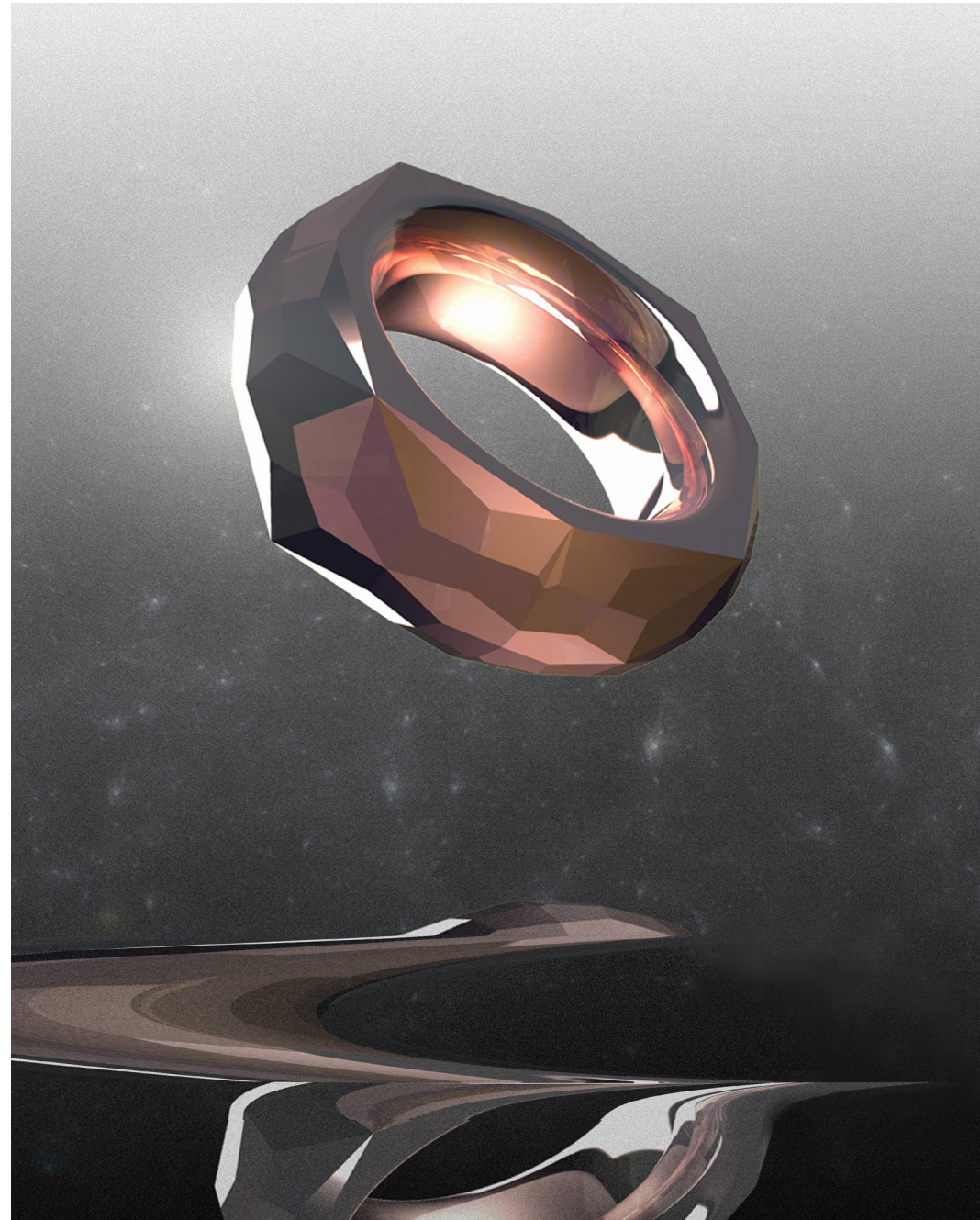
SKU 1100-0009  
3 COLORS

An exterior formed of complex reflective facets contrasts the comfortably rounded wear surface of our Paradox hinged weights.



DIMENSIONS: 16MM INNER DIAMETER, 26MM OUTER DIAMETER  
MUST BE AT LEAST 00 GAUGE OR LARGER TO WEAR  
CAST IN 316L STAINLESS STEEL  
AVAILABLE IN ION-PLATED 18K YELLOW GOLD, 18K ROSE GOLD AND NAKED STEEL

CONVERGENCE 2022







# MODERN HOOPS



## OCEANUS

SKU 3000-0020  
3 COLORS

Gaze long enough at these radiating hoops, a symphony of wavy bands, negative space and details will bring your eyes to a never-ending center that seems to captivate you into the depths of the unknown. The Oceanus earrings are perfect for any outing or occasion.



DIMENSIONS - 50.8MM X 57.15MM  
CAST BODY IN BRASS WITH 19 GAUGE .925 SILVER WIRE  
WEIGHT: 22.5 GRAMS  
PLATED IN .925 SUSTAINABLE RECYCLED SILVER, 18K ROSE GOLD AND 18K YELLOW GOLD  
SOLD AS A PAIR  
CAN BE WORN AS STANDARD EARRINGS OR THROUGH TUNNELS  
LIMITED EDITION DESIGN

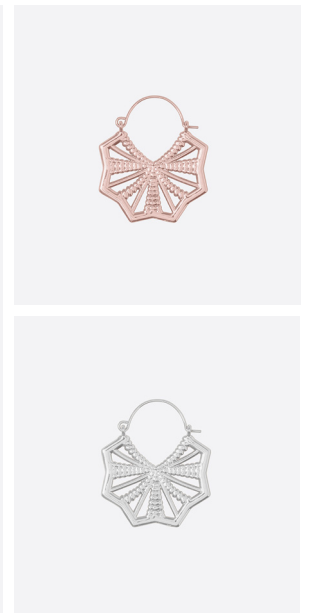
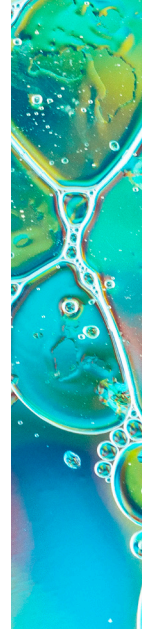


CONVERGENCE 2022

## TITAN

SKU 3000-0022  
3 COLORS

The Titan earring is inspired by microscopic marine algae that produce 25% of the world's oxygen. Seven ribbed columns make up the core structure of this medallion style earring which is aesthetically pleasing and lightweight.



DIMENSIONS - 63.5MM X 63.5MM  
CAST BODY IN BRASS WITH 19 GAUGE .925 SILVER WIRE  
WEIGHT: 24 GRAMS  
PLATED IN .925 SILVER, 18K ROSE GOLD AND 18K YELLOW GOLD  
SOLD AS A PAIR  
CAN BE WORN AS STANDARD EARRINGS OR THROUGH TUNNELS  
LIMITED EDITION DESIGN

CONVERGENCE 2022



# PROMETHEUS

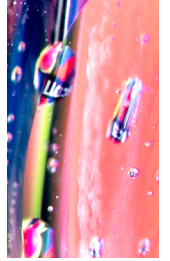
SKU 3000-0024  
3 COLORS

Linear patterns mimic an Other Worldly language to create a beautiful pair of hoop earrings. These earrings are the perfect statement pieces but light enough for everyday wear.



DIMENSIONS - 50.8MM X 57.15MM  
CAST BODY IN 100% RECYCLED BRASS WITH 19 GAUGE .925 SILVER WIRE  
WEIGHT: 14.1 GRAMS  
PLATED IN SUSTAINABLE RECYCLED STERLING SILVER, 18K ROSE GOLD AND 18K YELLOW GOLD  
SOLD AS A PAIR  
CAN BE WORN AS STANDARD EARRINGS OR THROUGH TUNNELS

CONVERGENCE 2022





## VENUS

SKU 3000-0021  
3 COLORS

Inspired by the mysteries of the world of Medusozoa. More commonly known as jellyfish, these modern hoops celebrate movement of these unique sea creatures with intricate interlocking tendrils creating futuristic delicate patterns.



DIMENSIONS - 63.5MM X 63.5MM  
CAST BODY IN BRASS WITH 19 GAUGE .925 SILVER WIRE  
WEIGHT: 24 GRAMS  
PLATED IN .925 SILVER, 18K ROSE GOLD AND 18K YELLOW GOLD  
SOLD AS A PAIR  
CAN BE WORN AS STANDARD EARRINGS OR THROUGH TUNNELS  
LIMITED EDITION DESIGN

CONVERGENCE 2022



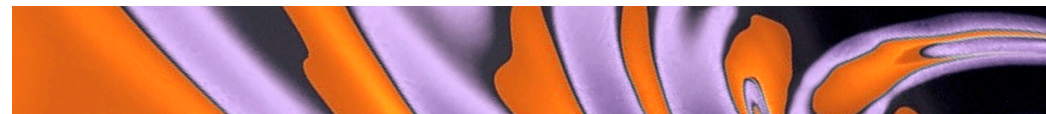
## SIRENS

SKU 3000-0023  
3 COLORS

The Sirens truly do justice to their namesake. These hoops draw inspiration from the mythological sirens who sang and lured sailors to shipwreck and were also known to charm the winds. The shape is evocative of the sound waves that echo through sea and air. The undulating lines create movement and dimension while maintaining a delicate form.



DIMENSIONS - 39MM X 42MM  
CAST BODY IN BRASS WITH 19 GAUGE .925 SILVER WIRE  
WEIGHT: 12 GRAMS  
PLATED WITH .925 SILVER, SUSTAINABLE RECYCLED 18K YELLOW AND ROSE GOLD  
SOLD AS A PAIR  
CAN BE WORN AS STANDARD EARRINGS OR THROUGH TUNNELS





# NECKLACES



CONVERGENCE 2022



## SATIN SNAKE CHAIN

SKU 4200-0004  
2 COLORS

A soft satin finish and gentle center ridge make this delicately linked and wonderfully tactile snake chain a pleasure to hold and wear.



WEIGHT: 15.4G  
LENGTH W/CLASP: 19.75"  
6MM WIDE  
SOLID 316L STAINLESS STEEL  
AVAILABLE IN ION-PLATED 18K YELLOW GOLD AND  
SATIN FINISHED NAKED STEEL



## CUBAN CHAIN

SKU 4200-0001  
3 COLORS

Tether's first necklace creation is a 12mm (1/2") thick cuban link curb chain featuring a buckle closure. Designed to sit higher on the neckline but can be worn however you prefer, the Tether rendition of this classic design is available in 18", 20", 24" and 26" for your comfort.



AVAILABLE IN ION-PLATED 18K ROSE GOLD,  
18K YELLOW GOLD, AND HIGH-POLISHED NAKED STEEL  
SOLID 316L STAINLESS STEEL

CONVERGENCE 2022



## HORIZON BOLO TIE

SKU 4201-0004  
2 COLORS

The Horizon bolo tie is our interpretation of a classic south-western Native American accessory. Entirely composed of recycled brass, this can be worn as a tie or as a necklace. The 1-1/2" slide features a stunning sun-like medallion reminiscent of the scattering of rays during golden hour on the horizon. The round snake chain adds to the sleek monochromatic look and allows the slide to move smoothly but sit securely for a customized fit. From tip to tip, the necklace measures 38" but can be adjusted to fit snug at the neck or lower on the collar.

MADE OF RECYCLED BRASS, PLATED WITH RECYCLED 925 STERLING SILVER  
ALSO AVAILABLE PLATED WITH RECYCLED 18K YELLOW GOLD



## EMPIRE BOLO TIE

SKU 4201-0005  
2 COLORS

The Empire bolo tie is our interpretation of a classic south-western Native American accessory. Entirely composed of recycled brass, this can be worn as a tie or as a necklace. The 1-1/2" inverted triangle features graduating polished dune-like ridges that create a dynamic profile. The round snake chain adds to the sleek monochromatic look and allows the slide to move smoothly but sit securely for a customized fit. From tip to tip, the necklace measures 38" but can be adjusted to fit snug at the neck or lower on the collar.

MADE OF RECYCLED BRASS, PLATED WITH RECYCLED 925 STERLING SILVER  
ALSO AVAILABLE PLATED WITH RECYCLED 18K YELLOW GOLD

## FRANCO CHAIN

SKU 4200-0002  
3 COLORS

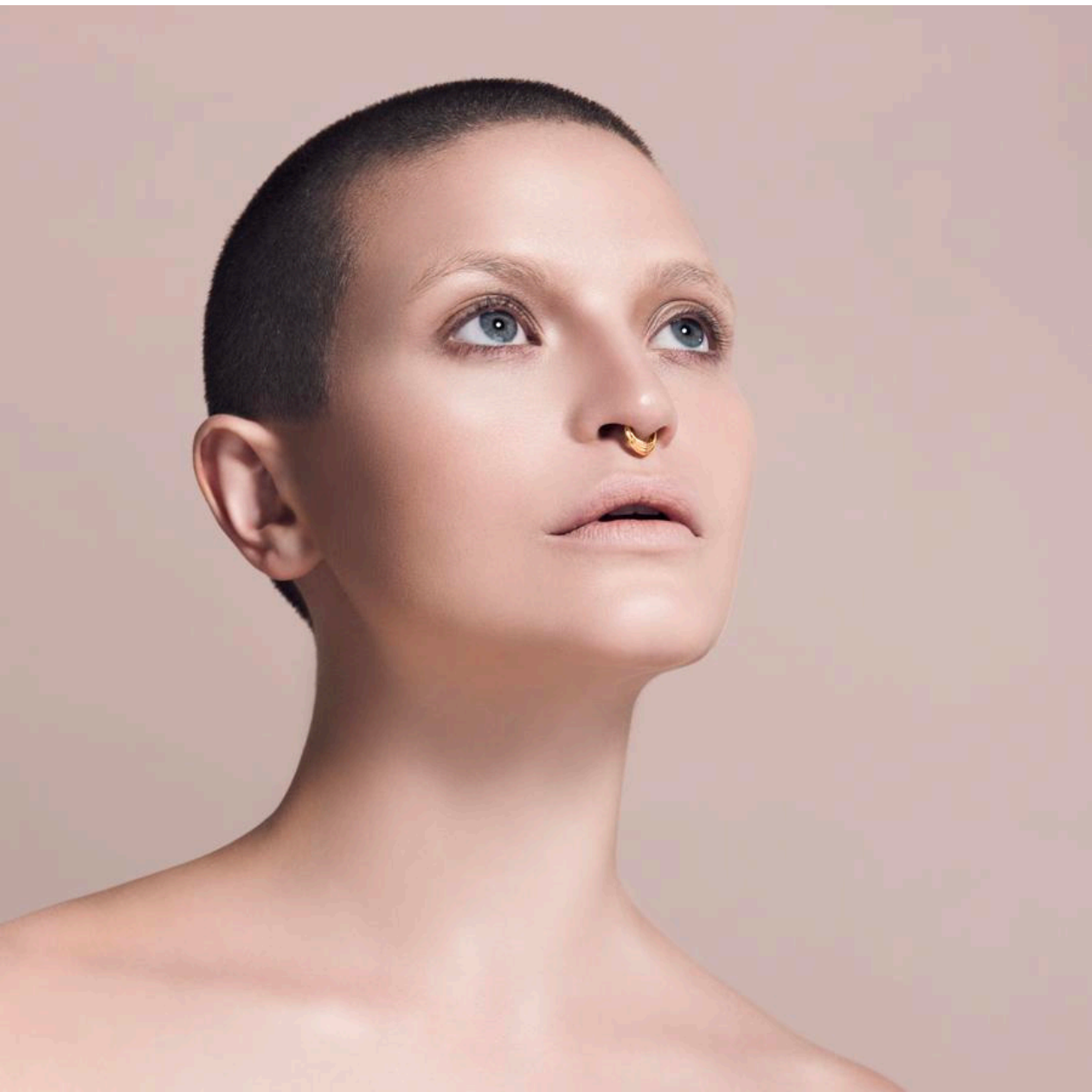
Tether once again created the perfect classic chain with our Franco Spinal Chain - a 6mm (1/4") width classic necklace that sits at the perfect length at 24". Inspired by the classic Cuban chain, the Franco chain consists of four sides braided together into a unique V shape pattern, instantly creating a timeless design. Cast in bio-compatible 316L stainless steel, our Franco chain will not rust or tarnish, and is available in ion-plated 18K Rose Gold, 18K Yellow Gold, and high-polished Naked Steel.

SOLID 316L STAINLESS STEEL  
AVAILABLE ONLY IN 24" LENGTH  
AVAILABLE IN ION-PLATED 18K ROSE GOLD,  
18K YELLOW GOLD, AND HIGH-POLISHED  
NAKED STEEL



CONVERGENCE 2022





CONVERGENCE 2022

# CLASSIC CLICKERS





## ARCHIVE

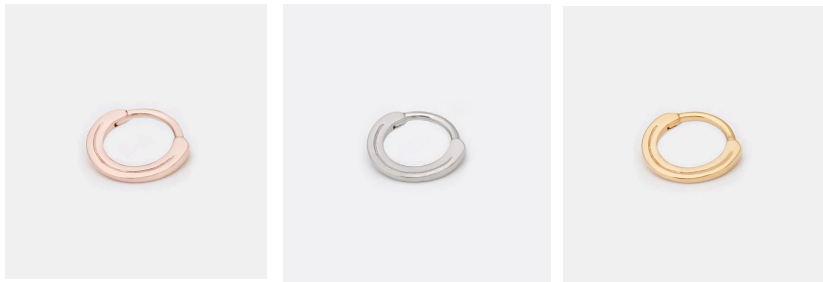
SKU 1000-0016  
3 COLORS

### AVAILABLE SIZES

- 14 GAUGE  
- 8MM - 5/16"  
- 9.5MM - 3/8"
- 16 GAUGE  
- 8MM - 5/16"  
- 9.5MM - 3/8"

CAST IN 316L STAINLESS STEEL

Crystals have long been recorders of energy and information. From silicon found in our micro-chips to crystals known to be used as healing stones millennia ago, crystals have served as archives of energy in our civilization. To honor this fundamental notion, we built this simple yet bold adornment that perfectly frames your piercing. Hand polished to a mirror finish and recommended for everyday wear.



## HALO

SKU 1000-0022  
3 COLORS

2 DIAMETER SIZES - 8MM / 9.5MM  
CAST IN 316L STAINLESS STEEL  
AVAILABLE IN 14 GAUGE ONLY

Halo is the name for a family of optical phenomena produced by sunlight interacting with ice crystals suspended in the atmosphere. Halos can have many forms, ranging from colored or white rings to arcs and spots in the sky. The ice crystals responsible for halos are typically suspended in clouds, and behave like prisms and mirrors, refracting and reflecting light between their faces, sending shafts of light in particular directions. Our Halo design is a minimal, flat perfect ring designed specifically for stacking to create a unique layered effect.



## DRAKE CUFF

SKU 4101-0003  
4 COLORS

### AVAILABLE SIZES

- 14 GAUGE  
- 6.5MM - 1/4"  
- 8MM - 5/16"  
- 9.5MM - 3/8"
- 16 GAUGE  
- 8MM - 5/16"

CAST IN 316L STAINLESS STEEL

Our most lightweight stainless steel piercing jewelry piece- the Drake Cuff creates a dynamic layered effect that is comfortable yet striking. Inspired by the curving lines of a viking longship keel, this piece is designed to create depth to your septum piercing aesthetic with a stunning tapered cuff. Designed as part of the Drake Collection. Available in high quality fused Black PVD, Ion Plated 18k rose gold, Ion Plated 18k yellow gold, and naked.



## JANUS

SKU 1000-0024  
3 COLORS

2 DIAMETER SIZES - 8MM / 9.5MM  
CAST IN 316L STAINLESS STEEL  
AVAILABLE IN 14 GAUGE ONLY

In ancient Roman religion and myth, Janus is the god of beginnings, transitions, duality, passages, and endings. He is usually depicted as having two faces, as he looks to the future and to the past. The lines on this subtle hinge clicker emulate the duality of having two faces. This low profile design can be worn both as a stand alone piece or



## MELANGE

SKU 1020-0011  
4 COLORS

### AVAILABLE SIZES

- 14 GAUGE  
- 7MM - 9/32"  
- 8MM - 5/16"  
- 9.5MM - 3/8"
- 16 GAUGE  
- 8MM - 5/16"  
- 9.5MM - 3/8"

CAST IN 316L STAINLESS STEEL

Layers of beads cascade and blend into a complex and timeless configuration for this septum piece design. Inspired by the distinctive work of H.R Giger, this clicker is eye-catching from all angles. One of our proudest designs, we believe we've captured a mood that is both of a bio-mechanical world as well as of an ancient pagan dreamscape.

Available in high quality fused Black PVD, Ion Plated 18k rose gold, Ion Plated 18k yellow gold and naked.



## OMNI

SKU 1000-0034  
4 COLORS

### AVAILABLE SIZES

- 14 GAUGE  
- 8MM - 5/16"  
- 9.5MM - 3/8"  
- 12MM - 1/2"
- 16 GAUGE  
- 8MM - 5/16"  
- 9.5MM - 3/8"

CAST IN 316L STAINLESS STEEL

The Theory of Everything is a hypothetical, single all-encompassing framework that fully explains and links together all physical aspects of the universe. Our Omni design is a nod to this approach for understanding our cosmos, and the piece doesn't spare any details. This elaborate clicker is arranged with segments upon smaller segments, creating a complex yet mesmerizing effect. Also available in 14g 12mm (1/2") diameter, making this unique design perfect for conch piercings.

Available in high quality fused Black PVD, Ion Plated 18k rose gold, Ion Plated 18k yellow gold and naked.



## CHASM

SKU 1000-0032  
4 COLORS

### AVAILABLE SIZES

- 14 GAUGE  
- 8MM - 5/16"  
- 9.5MM - 3/8"  
- 12MM - 1/2"
- 16 GAUGE  
- 8MM - 5/16"  
- 9.5MM - 3/8"

CAST IN 316L STAINLESS STEEL

Evolution of the universe itself emerged from the apparent randomness of chaotic complex systems that give way to underlying patterns and interconnectedness. The classic Greek word for Chaos meant emptiness, vast void, chasm. An evolution of our classic Rift clicker, the Chasm has a compact profile that creates a continuous symmetrical effect. Also available in 14g 12mm (1/2") diameter, making this classic design perfect for conch piercings.

Available in high quality fused Black PVD, Ion Plated 18k rose gold, Ion Plated 18k yellow gold and naked.

CONVERGENCE 2022







A black and white artistic rendering of a gravitational well or spacetime curvature in space. A large, dark, curved shape, resembling a funnel or a well, dominates the center of the image. It is filled with numerous small, bright white dots, suggesting stars or particles being pulled into the center. The background is a dark, starry space with some nebulae visible on the left side. The word "CONVERGENCE" is written in large, white, sans-serif capital letters across the middle of the image, centered over the dark curved shape.

CONVERGENCE





 [tetherjewelry](#)  
[www.tetherjewelry.com](http://www.tetherjewelry.com)  
[info@tetherjewelry.com](mailto:info@tetherjewelry.com)

TETHER